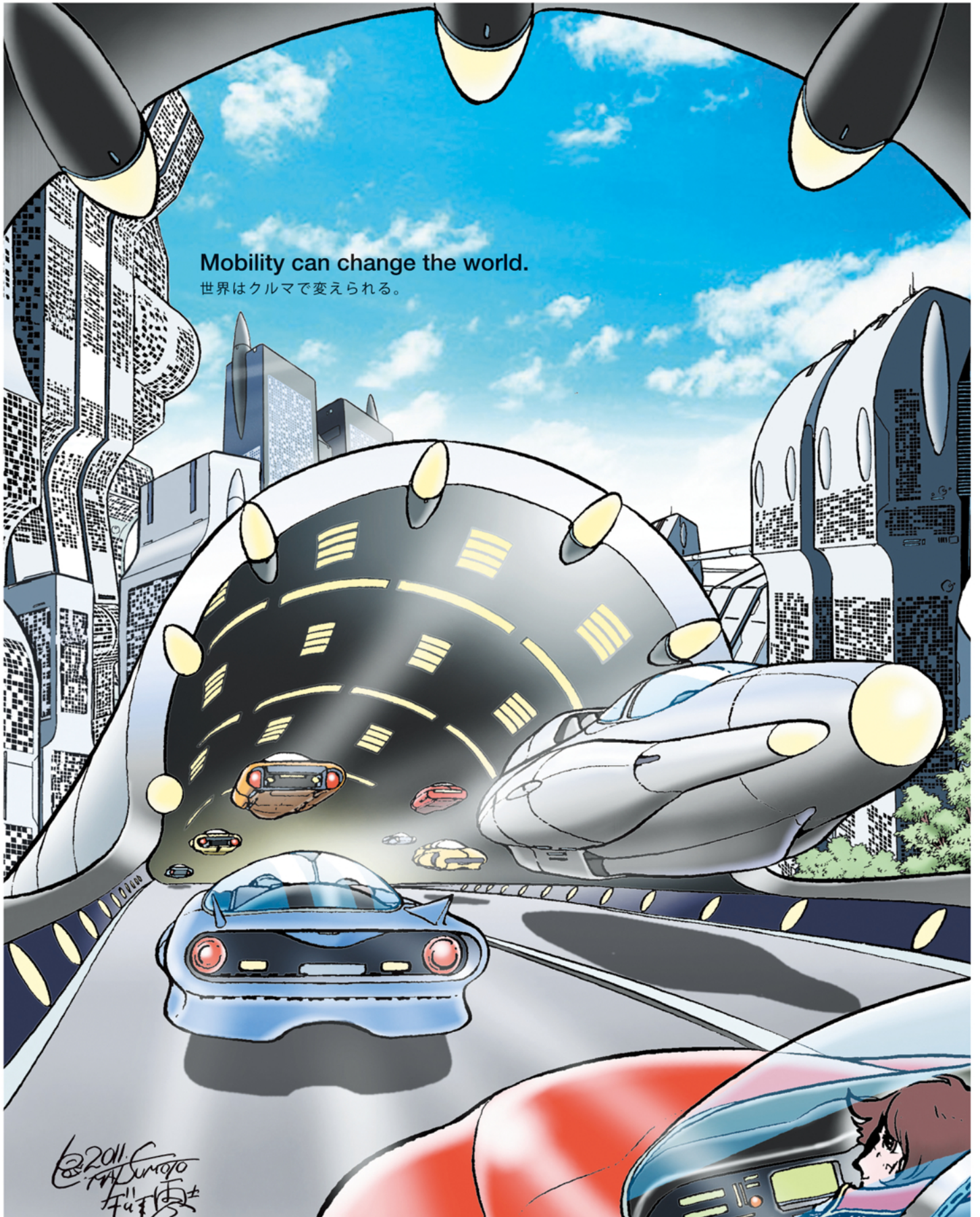


TOKYO MOTOR SHOW 2011 NEWS 11.30

[東京モーターショーニュース2011・英語版]

WEDNESDAY VOL.01 ENGLISH



Volkswagen Motor Show

2  1 1



The Beetle The 21st Century Beetle. On display at Volkswagen booth.

German Engineering @the Pulse of Time

The 21st Century Beetle is now here.



thebeetle.jp



Volkswagen. Das Auto.

Compact.
Coupé?



facebook.com/RangeRoverEVOQUE.jp

RANGE ROVER



landrover.jp/special-evoque/



EVOQUE DEBUT



BMW i



駆けぬける歓び



BMW i. BORN ELECTRIC.

初めて日本に出現。西1ホールにて展示中。

Here in Japan for the first time. See it on display at West Hall 1.





zoom-zoom
zoom-zoom
zoom-zoom

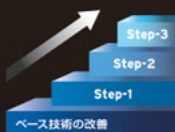
環境の先にある、走る喜びを。

これから10年先も、世界を走るクルマのほとんどがエンジンを載せている。
マツダはそう予測して、SKYACTIV TECHNOLOGYという技術革新に挑戦しました。
まずはエンジンからボディまで、クルマのすべての基本性能を革新し、
さらに電気デバイス技術を組み合わせていくことで、走る喜びを高めながら、
優れた環境・安全性能を実現していきます。

翼をもったクルマへ

SKYACTIV TECHNOLOGY

TO THE
FUTURE



- Step-3 モーター駆動技術 (ハイブリッドシステム)
- Step-2 減速エネルギー回収技術
- Step-1 バッテリーマネジメント技術 (アイドリングストップ機構「i-stop」) (バワートレイン、軽量化など)

2012年春 発売予定

MAZDA
CX-5



第3弾

好評発売中

新世代 MAZDA
AXELA



第2弾

好評発売中

新世代 MAZDA
DEMIO



第1弾

SKYACTIV-G
SKYACTIV-DRIVE
SKYACTIV-D
SKYACTIV-CHASSIS
SKYACTIV-BODY

SKYACTIV TECHNOLOGY搭載モデル、続々デビュー。

好評の新世代デミオ、新世代アクセラ。そして、量産モデルとして初めてSKYACTIV TECHNOLOGYをフルに搭載し、新デザインテーマ「魂動(こどう) — Soul of Motion」を初採用したマツダ CX-5 (2012年春 発売予定)。クルマを愛する人へ、新世代のマツダ車が、これからも続々と登場します。

PHOTO:第42回東京モーターショー2011出品車「マツダ CX-5」、コンセプトカー「マツダ 雄 (TAKERI)」

後席もシートベルト、チャイルドシートも忘れずに。
発進・加速はゆるやかに。エコドライブを心がけよう。

カタログのご請求、商品についてのお問い合わせ、
ご相談はマツダ(株)コールセンター

0120-386-919

受付時間：平日 9:00~17:00
土・日・祝日 9:00~12:00 13:00~17:00

www.mazda.co.jp



Re BORN



**FUN TO
DRIVE,
AGAIN.**



© Fujiko-Pro, Shogakukan, TV Asahi, Shuei, and ADK

Collect the stamps and get "Cars 2" original prizes

The 42nd Tokyo Motor Show 2011

To celebrate the release Disney / Pixar "Cars 2" Blu-Ray & DVD
Rinkai Fukutoshin Area Stamp Rally

A stamp-rally is now being held to commemorate the Tokyo Motor Show, Rinkai Fukutoshin Machizukuri Council and the launch of Disney/Pixar "Cars 2" Blu-Ray and DVD in the Rinkai Fukutoshin area during the 42nd Tokyo Motor Show, Dec. 3-11 (9 days).

Collect original "Cars 2" stamps and get great prizes!

Prize for Participation in the 1st Stage

We are offering "Cars 2" clear plastic folder to the first 10,000 people who collect 4 stamps at the prize exchange booth!



With any purchase over ¥1,000

Double Chance Prizes (for a total of 100 winners)

In addition, you can challenge the slot machine if you collect above a certain number of stamps.



Laser Control
Lightning McQueen
TOMY COMPANY,LTD.

※ Please show the receipts which prove that you spend ¥1,000 or more. ● Information in this document is subject to change without notice. Even after running out of stock for the prizes, we hold the stamp-rally during the period. The actual prizes may differ slightly from the pictures shown. For inquiries and further information, please contact us on 03-3496-3247. (Stamp Rally Office)



New on
Blu-Ray
& DVD
DEC. 2!



Come to the West Hall Atrium
to meet the life-sized McQueen!



©Disney/Pixar

ET² × SCRAP

musicChef



mystery solving game

Can you solve this mystery?

"Labyrinth Motor Show ~ Follow the Melody ~"

"music-Chef", the music streaming service for cars, and SCRAP, a company producing

"Real Escape Game" which has attracted more than 50,000 participants totally, has team up to produce the escape game by solving the puzzles hidden in the Tokyo Motor Show.

Date

2011.12.3 sat > 12.11 sun

9days Game registration hours 10:00~18:00

*Registration will close at 15:00 on Sunday, 16:00 on the final day.

*Approximate time required: 1 to 2 hours.

Games can start at any time while registration is open.

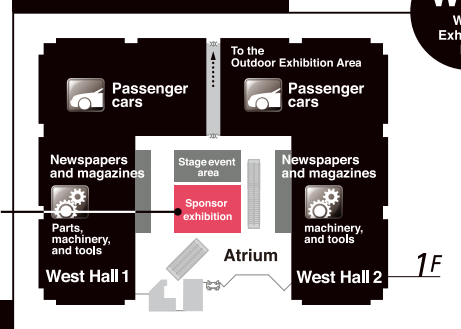
Please visit the "ET Square" booth located in the West Exhibition 1st Floor Atrium



※ このイベントは、実際にあなたがスパイとなって、謎を解くゲームイベントです。

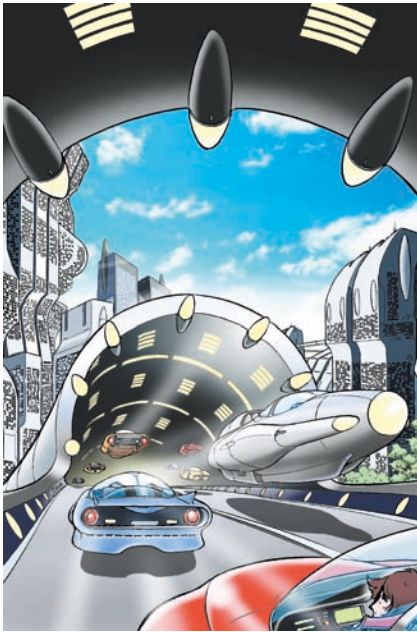
ET² × SCRAP

Come visit us at our booth!



West
West Exhibition Hall

* In this event, you will act as a spy and solve the mystery



Cover

Cars going through an underground tunnel at high speed. The concept of "lanes" has been abolished and cars can go from side to side and up and down, but safety is ensured by radars that maintain a constant distance between vehicles.

Publisher	Japan Automobile Manufacturers Association, Inc.
Production	Resonance Co., Ltd
Editing	BOSTON Incorporated
Cover art	Leiji Matsumoto
Producer	Reiji Masazumi Kondo (Resonance Co., Ltd)
Editorial director	
	Shiro Horie (BOSTON Incorporated)
Planner	Yasuhiko Tada (BOSTON Incorporated)

□Editing	
Editing	Shin Yoda, Hiroshi Muroi, Toshiki Aijima (Iconic inc.), Mitsuru Takahashi, Tomoki Watase

Photographs	Gensho Haga
Design	Phantom graphics inc.
Proof reading	Chikako Yuasa
Art director	Hiroyuki Kato (Phantom graphics inc.) Masahiko Katayama

Account director	Katsuhiko Serata, Yuichiro Sugo, Hiroshi Hidano, Maki Konno, Masashi Nishiwaki, Kiyokazu Niki, Yasuaki Akatsuka, Mutsumi Muto, Hiroyuki Demura, Masahiko Nozaki (K.K. Kohyusha)
------------------	--

Translation	Mari Sekine, ABILLION, Inc.
Supervision	Makiteru Ishikawa
Support	Rinkai Fukutoshin Machidukuri Council
Print	TOPPAN PRINTING CO., LTD.

CONTENTS

- 09 **Stamp Rally & Mystery Solving Spy Game**
- 10 **Interview with the Chairman**
Aiming to Become the Leading Technology Motor Show of the World
Japan Automobile Manufacturers Association, Inc. (JAMA) Chairman **Toshiyuki Shiga**
- 12 **The 42nd Tokyo Motor Show 2011
CONCEPT & INTRODUCTION**
Experience how "Mobility can change the world."
- 14 **CARS TO GET ATTENTION**
JAPANESE PASSENGER CARS, IMPORTED PASSENGER CARS
JAPANESE COMMERCIAL VEHICLES, JAPANESE MOTORCYCLES
- 27 **TOPICS & NEWS**
Exciting Opening Events held on December 3 (Sat)
Opening Parade, Talk Sessions by the Top Executives
Voices Collected by the "Mimi Car"
- 28 **CURTAIN RISES**
The 42nd Tokyo Motor Show Begins!
- 29 **VOICE**
Messages from Four Prominent Women
Chisako Takashima, Chisato Morishita, Ritsuko Kunii, Karen Michibata
- 30 **COVER ART**
Scenes showing cars in the 22nd century
- according to Leiji Matsumoto
- 32 **PRESS BRIEFING SCHEDULE**
- 33 **PRESS CENTER**
- 34 **TOKYO WATERFRONT AREA MAP
FOR DISCOUNT COUPONS**
- 36 **TOKYO BIG SIGHT MAP**
- 38 **WEST HALL MAP**
- 40 **EAST HALL MAP**
- 42 **The 42nd Tokyo Motor Show 2011 Sponsors**



TOKYO MOTOR SHOW 2011
NEWS 11.30

Japan Automobile Manufacturers Association, Inc. (JAMA) Chairman

Toshiyuki Shiga

● Profile

Born in 1953 in Wakayama Prefecture, and joined Nissan Motor Co. in 1976. Positions held include the head of the Jakarta Branch and Planning Office of the Asia Pacific Sales Division, and head of the Alliance Promotion Office. Currently serves as the Representative Director and Chief Operating Officer.



Interview with the Chairman Aiming to Become the Leading Technology Motor Show of the World

The mission of the revamped Tokyo Motor Show, which returned to Tokyo after 24 years, is to enlarge the fan base of automobiles and motorcycles. In addition to displaying the latest products, we must consider how automobiles and mobility should develop and how they should associate with society, and propose how a new society with automobiles should be like. By addressing Japan's commitment to manufacturing - which is supported by the high standards in industrial technology, safety and environmental measures, and IT - I believe it is possible to nurture that fan base. Japan has suffered unspeakable damage from the Great East Japan Earthquake which struck on March 11, 2011. Manufacturing in the automobile industry plummeted due to the severance of the supply chain, but as a result of the collective efforts by the entire automobile industry, the situation was normalized much faster than was estimated.

179 exhibitors from 12 countries and 1 regions will be participating in this year's Tokyo Motor Show. All 14 Japanese automobile manufactures and 15 brands will be exhibiting, as well as 21 foreign (mainly European) manufactures and 25 foreign

brands (passenger cars, commercial vehicles, motorcycles, and Carrozzerias); 53 cars will be world premieres, and 82 cars will be Japan premieres. It will be an impressive showcase and a suitable scale for the renowned international motor show.

The theme of this year's show is "Mobility can change the world." To demonstrate the theme, an exhibit called "SMART MOBILITY CITY 2011" will be held within the show. While there is a heightened awareness to issues such as the global environment and energy problems, we will present how mobility will address those issues and contribute to society through the advances in technologies associated with automobiles.

Asia is seeing rapid growth in the automobile market, and interests in motor shows have risen among cities such as Beijing, Shanghai, and New Delhi. JAMA positions the Tokyo Motor Show as a symbol of Japan being a technological powerhouse, and will stand to be the leading technology motor show by becoming a source of information for cutting edge technologies which tie together automobiles, cities, and people.

Mobility can change the world.

The Tokyo Motor Show seeks to be the world's leading technology motor show.

Automobiles are more than just transportation; they are fast becoming solutions to global issues such as the environment, safety, energy, smart grid, and ITS. The solutions will also be an important catalyst for Japan to overcome its difficult time.

Experience for yourself the most advanced automobiles and technologies, and you will surely be impressed. Then, imagine what the future will be like - as momentum towards the future begins from one's imagination.



Experience how "Mobility can change the world."

Touch, feel, and speak at the new Tokyo Motor Show.

Experience cutting-edge technology

Passenger Car Test Ride Program by Professionals' Driving / Motorcycle Test Ride

[Outdoor Exhibition Area]

Ride in one of the latest models driven by the members of the Automobile Journalist Association of Japan (AJAJ) and professional instructors as you listen to the overview of the car driven by them. A motorcycle test ride where you can ride yourself is also available.

[Passenger Car Test Ride Program by Professionals' Driving]

December 2 (Fri) to 6 (Tue)

■ Participating manufacturers
Suzuki, Subaru, Toyota, Nissan, Honda, Mitsubishi, Audi, AMG, Citroën, Jaguar, Volkswagen, Peugeot, Porsche, Mercedes-Benz, Land Rover, Renault, and Lotus.

*Subject to change without notice



[Motorcycle test ride]

December 8 (Thu) to 11 (Sun)

■ Participating manufacturers
Kawasaki, Suzuki, Honda, Yamaha, and KTM



New discoveries

From a Journalist's Perspective

A member of the Automobile Journalist Association of Japan (AJAJ) will be your guide, and will guide you through from a professional's perspective. A paid tour with pre-reservation required.

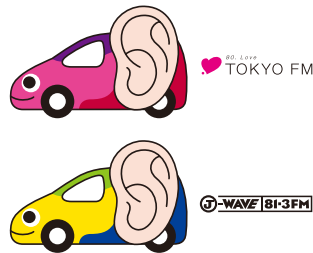
[Guides] Yasuo Kusakabe, Makiteru Ishikawa, Kiyoshi Komoda, Yoshio Ishikawa, Goro Okazaki, Manabu Kawaguchi, Kei Takeoka, Etsuro Fushiki, Hiroshi Matsushita, Hajime Aida, Takumi Chiba, Koichiro Okamoto, Yukinaga Kase, Hideaki Kataoka, Yorimasa Katoh, Kan Kawakami, Yumi Kawabata, Takahiro Kudo, Akifumi Kondo, Satoshi Saito, Shinsuke Saito, Dangan Jiro, Naoya Suzuki, Hideyuki Takane, Masahiro Takayama, Hiroo Takiguchi, Tomohiko Tsutsumi, Takahito Nakamura, Naoto Nishimura, Rei Hashimoto, Tomoko Fujishima, Tamotsu Horikoshi, Masataka Matsutoya, Akiko Mamoru, Makoto Maruyama, Kenji Momota, Kazunori Morioka, Youichi Morohoshi, Motohiro Yamazaki, Toshimasa Yamashiro, Yumi Yoshida, and Peter Lyon (honourifics omitted)

*Guides subject to change without notice
*For details regarding pre-reservation, please see the ticket information on the back cover

Your opinions count

"Mimi Car"

This is a collaboration with the FM radio stations J-WAVE and TOKYO FM. The Mimi Car will go out to town to collect your voices, and deliver them to the Tokyo Motor Show. For information on where the car is, go to the website www.mimicar.jp.



Hello, I'm "Mimi Car"
www.mimicar.jp

Too exciting to miss!

Stage Event [Atrium]

A special stage will be set up on the 1st floor of the West Exhibition Hall. There will be live performances by Fuji TV, and TOKYO FM; and other events which mixes fashion with automobiles. On December 3, the ballots for the Car of the Year Japan will be opened and

the finalist announced. On December 4, there will be a talk event regarding employment opportunities in the automobile industry by the chief editor of RIKUNABI.

New things to learn about cars

Tokyo Motor Show Symposium 2011

[Conference Tower 6th floor]

Please feel free to participate in the symposiums focused on cars.

Date and time	Theme / Facilitator	Place
Dec 3 (Sat) 13:30 to 16:30	Cheering Japan up as they Travel by Car Why not become a "Car Travelist"?	Conference Room #607
	Nippon Road Destinations	
Dec 6 (Tue) 13:30 to 17:30	The 12th Automobile Safety Symposium Aiming for the coexistence of humans and cars Safety measures using the latest technology	Conference Room #607/608
	Ministry of Land, Infrastructure, Transport, and Tourism	
Dec 7 (Wed) 13:00 to 17:00	Future Transport Eco-friendly future technologies for large vehicles and logistics	Conference Room #607/608
	National Traffic Safety and Environment Laboratory	
Dec 8 (Wed) 13:00 to 17:00	Towards creating new values for cars What we have learned from the earthquake	Conference Room #607/608
	Japan Automobile Research Institute	
Dec 10 (Sat) 14:00 to 15:30	The freedom of transportation in the future Welfare vehicles are symbols of restoration - what we have realized from the earthquake affected areas	Conference Room #607
	Japan Automobile Manufacturers Association	

The schedule above are subject to change without notice

Please see the official website for details

<http://www.tokyo-motorshow.com>

Mobile site <http://m.tokyo-motorshow.com>

Information noted above are subject to change with out notice. The pictures and illustrations may not accurately reflect the actual event. We cannot refund tickets due to cancellation of events or symposiums.

SMART MOBILITY CITY 2011

The future of people, mobility, and cities realized by cutting-edge technology



Main host: SMART MOBILITY CITY 2011 Planning Committee, Japan Automobile Manufacturers Association / Co-host: New Energy and Industrial Technology Development Organization, Smart Community Alliance

EXHIBITION

[West Hall 4]

What are "next-generation automobiles" and "smart communities"? What can "ITS" do for us? They are the latest technologies shaping our future, and you will find a variety of companies and groups displaying them at the exhibit.

TEST RIDE

[Rooftop Exhibition Area]

You can experience auto-pilot demonstrations, test rides for next generation passenger vehicle (passenger seat), and test rides for next generation motorcycles.

■ Participating manufactures
Suzuki, Subaru, Toyota, Nissan,

How will mobility change the world? Experience how advances in automobile technology proposes a change in lifestyle and how cities will be organized. This is one of the representing events of this year's show.

Honda, Mitsubishi, Volkswagen, Mercedes-Benz, Yamaha, and Prostaff
 ■ Cooperating groups/Universities
 Kanazawa University, Keio University, National Institute of Advanced Industrial Science and Technology, Tokyo University of Agriculture and Technology, and ecom
 ■ Dates
 [Auto-pilot demonstration]
 December 2 (Fri) to 6 (Tue)
 [Test rides for next generation passenger vehicle and next generation motorcycles]
 December 7 (Wed) to 11 (Sun)

mobility society" (Supported by: New Energy and Industrial Technology Development Organization)

□ **Advanced Technology Seminar**
 (Conference Tower 6th floor)
 Technology and System presentation by exhibitors of SMART MOBILITY CITY 2011

■ [Presenting companies]
 Asahi Glass Co., Japan LP Gas Association, Agency for Natural Resources and Energy, and Toray Industries, Inc., and FM Tokyo

□ **Kids Workshop**
 <Free entry. Pre-registration required >
 A tour of SMART MOBILITY CITY 2011 and a hybrid-car workshop for kids will be held. Families are welcome.

CONFERENCE

[Conference Tower]

□ **International Symposium**
 (Conference Tower 6th floor)

<Free entry. Pre-registration required>

December 5 (Mon) 10:30 to 17:50
 "Next generation telematics and mobility society"
 (Supported by: ITS Japan)

December 9 (Fri) 10:30 - 17:10
 "Smart communities and next generation

Related Events

Tomica Corner
 [West Hall 3]



Back again this year, TOMY COMPANY, LTD. will sponsor the mini car exhibit and sales booth. An original Tomica for the Tokyo Motor Show will be on sale.

Fuji TV produces "WORLD FOOD CUP"
 [Outdoor Exhibition Area]



There will be a food court produced by Fuji TV's morning program "Mezamashi TV." The world will be divided into 8 regions, and some recommendable dishes from each region will be selected and served via the catering cars.

Produced by United Arrows

Tokyo Motor Show Fashion Shop



The automobile and fashion industries have stood up to liven up Japan. In collaboration with the auto manufacturers, charity T-shirts will be available in limited numbers, where the proceeds will be donated to earthquake relief charities. Other items on sale include items that will enrich your car life, including fashion items made of recycled products.

Venue at the "Tokyo Big Sight"! Please use public transportation when visiting

Access to the venue (travel times are estimates)

Rinkai Line [Kokusai Tenji Station] 7 minute walk

Osaki Station (JR) ← 13 min → Kokusai Tenji Station ← 5 min →

Shinkiba Station (JR, Tokyo Metro)

*From Osaki to Shinjuku/Omiya, there is a direct connection with JR Saikyo line.
 Convenient access to major cities: Shibuya (20 min), Shinjuku (25 min), Ikebukuro (31 min), Omiya (56 min), Kawagoe (78 min)

Yurikamome Line [Kokusai Tenji Seimon Station] 3 minute walk

Shinbashi Station (JR, Tokyo Metro, Toei Subway) ← 22 min →

Kokusai Tenji Seimon Station

Toyosu (Tokyo Metro) ← 8 min → Kokusai Tenji Seimon Station

Free shuttle bus (Tokyo Big Sight/East Exhibition Hall)

Tokyo Station (Marunouchi North) 35 min

Operation Every 5 to 10 minutes between Dec 3 to 11

Leaves Tokyo 9:00 - Leaves Big Sight Every 30 minutes from 11:00 to close

Bus (Tokyo Big Sight / Main Terminal)

Toei Bus Monzen Nakacho Station 30 min,
 Hamamatsucho 40 min, Tokyo Station Yaesu 40 min
 Airport Bus Haneda Airport (Limousine bus, Keikyu Bus) 25 min
 Narita Airport (Limousine bus) 60 min
 (Departs from Tokyo Bay Ariake Washington Hotel)
 Tokyo City Air Terminal (Limousine bus) 20 min
 Express bus Yokohama Station (Keikyu Bus) 50 min

Water Bus (Ariake Terminal 2 min walk)

Hinode Sanbashi (a 7 min walk from JR Hamamatsu Cho Station) 25 min

*Please check the website for operation status

Admissions Fee * Please see official web site for details

	Same Day	Afternoon	Evening
General	1,500yen	1,300yen	500yen
High school students	500yen	400yen	200yen
Middle school students and younger	Free		

Afternoon tickets: On sale on site at Mon to Sat after 15:00 only

Evening tickets: On sale on site at Mon to Sat after 18:00 only

● Tickets are on sale at convenience stores, public transportation facilities, major travel agencies, and ticket centers

● Tickets are on sale at the Tokyo Motor Show official website and can be purchased through the "e-tix online ticket system."
 Mobile tickets are also on sale.

For ticket sales, please see
<http://www.tokyo-motorshow.com/>



Inquiries
Tokyo Moto Show Big Sight Secretariat
 ☎03-5530-1315
 Operating hours are when the show is open



Sponsor: Japan Automobile Manufacturers Association, Inc
 Jidosha kaikan, 1-30, Shiba Daimon 1-chome, Minato-ku, Tokyo 105-0012 Japa

CARS TO GET ATTENTION

The 42nd Tokyo Motor Show is a showcase of the latest technology that can show you that "mobility can change the world." Here is a glimpse of some of the hottest new cars.

国産
乗用車

JAPANESE PASSENGER CARS

These cars are friendly to humans, to the planet, and everything alive. They bring forth a new and attractive world beyond our imagination. The leading technologies of Japan brings the future closer to us.

SUZUKI



REGINA

With a reduced body weight and enhanced aerodynamic performance, this next-generation global compact car achieved a JC08 mode mileage of 32 km/l. The vehicle weight is trimmed down at 730 kg, and carries an energy regenerative braking system, idling stop features, and a gasoline direct injection turbo engine.

SWIFT EV HYBRID

An EV based on SWIFT, it runs approximately 30 km when fully charged. It carries a 0.66 l engine for generating electricity, and when the battery runs low, the engine is activated and allows the car to charge while generating electricity. This is an EV that can travel long distances.



Q-CONCEPT

Having both the high mobility of motorcycles and the convenience of cars, this small mobility vehicle falls into a new category. With a small body that is only 2.5 m long and 1.3 m wide, it carries 2 people seated in a line. It is suitable for personal use, and for commercial use such as delivery services.

SUBARU



ADVANCED TOURER CONCEPT

Carrying a downsized 1.6 l boxer turbo-charged engine and the efficient CVT, this middle class station wagon marks the start of a new generation. Subaru's distinctive all-wheel drive structure with its symmetric layout is combined with a single motor hybrid system.



BRZ

With a 2.0 l boxer 4 engine, this FR sports vehicle carries a light and compact power unit in the lower part of the body, and realizes smooth handling. Toyota's direct injection technology is used in the engine, and is eco-conscious.

DAIHATSU



D-X

As if to define its own new category, this unique sports vehicle has a creative and aggressive exterior, while having a Spartan interior. It carries a newly designed 2 cylinder turbo-charged engine and is fun to drive.

PICO

It is a 2-seater EV commuter that is both eco and human friendly. The large openings and low and flat floor makes it easy to get on and off, and it is also easy to handle in tight spaces – providing all the benefits of being a compact car.



FC SHO CASE

Running on liquid fuel cells, this is a vehicle of the next generation. The compact fuel, which is free of noble metals, is set below the floor. The car is designed within the frame of a light vehicle, but is packaged to adapt to many usages. With a high concentration of energy, the liquid fuel cell makes it possible to travel longer distances.

TOYOTA



FUN-Vii



The name originates from "Fun Vehicle interactive internet." This concept car demonstrates how people, cars, and society should be "connecting" in the future. Technology for displaying images sent from smartphones and next generation ITS on the body of the car will be proposed.



FCV-R

This concept model runs on fuel cells, which do not emit car exhaust nor CO₂, and Toyota is promoting development and implementation and is hoping to commercialize by the year 2015. Using an enhanced stack of fuel cells, it can travel more than 700 km running on JC08 mode.



AQUA

This compact car carries the latest compact and light weight hybrid system, which combines a 1.5 l engine and a high-output motor. Although it has an easy-to-handle compact body, there is a large passenger and luggage space. AQUA will go on sale in December 2011, and will be gradually sold globally.

FT-EV III

An EV concept car that uses electricity as a substitute for fossil fuels, a short distance model is in production to go out to market in 2012. The FT-EV III model will carry lithium-ion batteries, which will allow longer journeys of up to 105 km fully charged.



NISSAN



PIVO3

The concept of this EV is integration with a future city. In parking lots where an automatic valet system is available, the driver can leave the car to park and recharge for itself. With all 4 wheels acting as rudders, this car can make a u-turn on a street that is only 4m wide.



NV350 CARAVAN

This new generation commercial van has enhanced features and more capacity. The interior measures 3 m, which is top in the 4-number compact class. There are many utility nuts on the walls of the interior, so that you can set up shelves or equipment as needed.



HONDA



AC-X

If you want to take an exciting drive, go for a cruise on the 1.6 l engine mode. Otherwise, switch on the auto-pilot mode, let the car clear of all the maneuvering equipment, and relax. AC-X will carry a plug-in hybrid system and will run for 50 km on EV mode.



MICRO COMMUTER CONCEPT

A micro mobility unit that is only 2.5 m in length and 1.25 m in width, it is designed to be a casual means of transportation in an urban setting. The can hook up to your smartphone and provide you with various information. It uses a lithium-ion battery and can travel for approximately 60 km.





JAPANESE PASSENGER CARS

MAZDA



TAKERI

This new generation middle class sedan has been designed based on Mazda's new design theme "pulse." SKYACTIV-D - which is the new highly efficient, high performing, and clean diesel engine - realizes a powerful driving experience, which is at the same time, comfortable and highly eco-friendly.



CX-5

The new MAZDA CX-5, due out next spring, is designed to visualize the vitality and exuberant motions which stirs the heart. It is the first mass-production model to implement the breakthrough "SKYACTIV TECHNOLOGY," where every aspect of the technology has gone through a zero-based review.



MITSUBISHI



CONCEPT PX-MiEV II

The SUV has a plug-in hybrid system that integrated the EV experience from i-MiEV with the latest environmentally conscious engine. The 2.1 4 cylinder engine and 2 motors power the 4 wheels, and mark 60 km/l in mileage and over 800 km in distance.



MIRAGE

As an entry car in the new markets, and as an eco-friendly car in the developed nations, this compact car was designed to meet the demands of both markets with small, low price, and fuel efficient as the concept. By keeping the weight to a minimum, the 1.1 3 cylinder engine aims to reach 30 km / l



LEXUS



GS450h

The new GS series will go on sale in the beginning of 2012. The GS450h carries the new 3.5 l V6 engine 2GR-FXE which implemented the next generation D-4S and Atkinson cycle. It is the first to integrate with FR hybrid technology.



GS350 F SPORT

This model is the sports version of the new GS series. It carries on the driving taste of the "F" of the "LFA," and is equipped with specialty designed parts both inside and outside the body. GS350 F SPORT brings out fully the quality of the new GS series, and is lined up as a serious sports model.



輸入
乗用車

IMPORTED PASSENGER CARS

Cars in all shapes and sizes have gathered together from around the globe. All of them have superior environmental standards, and are continuously pursuing their own styles. Explore where the global community is headed.

ALPINA



**B6 Bi TURBO
COUPE**

This car is based on the BMW 6 series coupe, equipped with an all-aluminum 4.4 l V8 twin turbo-powered engine and an 8-speed AT. The 2020 kg body can reach 100 km/h in 4.8seconds, and the maximum speed peaked at 311 km/h.



B3 GT3

The 2nd world premiere from ALPINA, this model won the ADAC GTMASTERS championship. Only 99 will be produced.

AMG



**C63 AMG COUPE
BLACK SERIES**

A pure sports coupe that pursues AMG's slogan of "Driving Performance," this flag ship model is built in small limited numbers. The maximum power of the 6.2 l V8 engine peaks at 517 ps, and the torque at 63.2 kg -m. Acceleration comes at 0 to 100 km/h in 4.2 seconds.



**SLS AMG
ROADSTER**

An open top roadster model is introduced following the coupe. The body's aluminum space frame structure is reinforced to support the open top, but only resulted in a 2 kg increase in weight. The doors have been modified from the gull wing doors to normal hinged doors.

AUDI



A1 SPORTBACK

A new 5-door sports back model is introduced into the A1 series. The comfort of the back seat is enhanced compared to the base model, and is basically laid out as a 4-seater. In Germany, there is a 5-seat option, and 3 types of gasoline engines are expected.



A6 HYBRID

The A6 is equipped with a 2 l boxer turbo-charged engine that marks 211 ps, and is combined with an electric motor that emits 54 ps, adding up to a total of 245 ps maximum power. The car can travel for 100 km only on the electric motor, and it is also possible to manually select which power source to use.

BMW



i8

A sports car with plug-in hybrid implemented, it balances high performance with high efficiency - as the i8 can reach from 0 to 100 km/h within 5 seconds, and run on 33 km/l. The front axle is powered by the motor, whereas the rear is by a 3 cylinder engine, and they are balanced at 50:50.



**ACTIVE
HYBRID 5**

A hybrid system is implemented in the 5 series, enhancing the fuel efficiency 20%. This 8-speed AT vehicle uses the engine as the 535i sedan, which is a 3l in-line 6 turbo charged engine, and is combined with a 55 ps motor.



輸入
乗用車

IMPORTED PASSENGER CARS

CITROËN



DS5

This is the 3rd model in the DS line, following the DS3 and DS4. The exterior design beautifully integrates a gran turismo and station wagon, and the cockpit-like interior with toggle switches shows off good taste as the flagship of the DS line up.

JAGUAR



XKR-S

This is the ultimate sports machine carrying an engine of the highest spec that Jaguar has made. The 5L V8 supercharged engine exerts 550 ps, accelerates from 0 to 100 km/h in 4.4 seconds, and reaches speeds of up to 300 km/h. The chassis is also finely tuned.

LAND ROVER RANGE ROVER



**RANGE ROVER
EVOQUE COUPE**

Introduced at the same time as EVOQUE, this 3 door coupe is a compact premium cross over. The on-road drive is smooth and sporty, while maintaining the off-road handling.



**RANGE ROVER
EVOQUE**

This urban vehicle is the most compact that RANGE ROVER has ever made. Fuel efficiency has been enhanced by using metals such as aluminum, magnesium, and titanium to lighten the weight. The interior is decorated with fine leather and wood.

LOTUS



EVORA S IPS

The IPS set for the EVORA S is a 3.5 l V6 supercharger engine that outputs 250 ps of power, combined with a 6-speed AT with a paddle shift allowing manual driving. Combining the most powerful engine with AT will surely meet many people's needs.

**ELISE
CLUBRACER
SPS**

In the ELISE line up, which consists of a 1.6 l and 1.8 l 4 cylinder engine with 6-speed AT, a 1.6 l engine + 6-speed robotized transmission spec is newly added. A sports mode is also added to the Dynamic Performance Management, and allows drivers to casually enjoy their driving.



MERCEDES-BENZ



B CLASS

The new B CLASS is now equipped with 1.6 l boxer turbo-charged engines and a 7-speed DCT. The double floor panel has been discontinued, and a regular floor has taken its place. Safety measures have also been revamped, such as the pre-crash safety feature.



F 125!

The electric motor power train runs on hydrogen-fuel cells, which does not require a high pressure tank due to new technology, so there is greater freedom regarding the packaging. The result was maximizing the interior space, as well as designing an expressive exterior. The new grill is quite original.



MINI



PACEMAN CONCEPT

A 2 door coupe based on the mini cross over, it leaves the traits of the Mini while flattening the roof, creating a good driving experience, and a premium position. The 1.6 I 4 turbo has a maximum power of 211 ps and a torque of 26.5 kg -m (while using overboost, 28.6kg -m).

COUPE

A 2-seater coupe based on the Mini shares the measurements of the hatch-back mode, but has a sharper appearance. There will be 3 grades lined up.



PEUGEOT



3008HYBRID4

Based on the 3008 model, the hybrid car combines a 2 l diesel engine with a motor to enhance fuel efficiency. The maximum power is at 200 ps, with an increased stability due to the torque reaching all 4 tires.

PORSCHE



PANAMERA GTS

GTS is awarded to only high performance vehicles, and this gran turismo is one of the most sporty machines in Porsche's lineup. It is equipped with a V8 engine hitting 430 ps, 7-speed DCT, an all-wheel system, and air/active suspensions.

911 CARRERA

The 911 CARRERA underwent a model change and came back with enhanced environmentally friendly features, as well as improvements in performance. The engine has been downsized from the previous 3.6 l to 3.4 l, and the 6 cylinder engine marked 350 ps. Reaches 100 km from 0 in 4.6 seconds.



SMART



FORTWO ELECTRIC DRIVE

This EV model is already performing test runs in Japan, and is being planned to go sale. It uses a lithium-ion battery developed by the US company Tesla, and the motor generates 41 ps. The maximum travel distance is 135 km, and can reach up to 100 km/h.

RENAULT



KANGOO IMAGE

This is a reference exhibition. With the same bumper design as the KANGOO BE BOP, bright two-toned colors have been applied to decorate the vehicle stylishly. Plan to be on sale in 2012.

CAPTUR

A concept car reflecting Renault's new design strategy. The theme of the car is "2 people travelling around the world together." The sporty crossover, streamline body, strong form and the unique form all hint at how Renault will design their cars.



VOLKSWAGEN



PASSAT ALLTRACK

This is a cross over with Passat Variant as the base. The all-wheel drive, air suspension where you can adjust the height of the car, bumper that has an under-guard, and the all-season tires are all features are fit for cross over model. Expected to go on sale in Europe in the spring of 2012.

THE BEETLE

After undergoing a model change from the previously new beetle, the new car has lower height and a wider body. The rear lines connecting the roof to the to the C pillar draws a curve as the sky colored beetle.





JAPANESE COMMERCIAL VEHICLES

Commercial vehicles, such as trucks and buses, carry people and products and support our daily lives. As the trend goes for passenger cars, trucks and buses are starting to adapt hybrid technology.

ISUZU



ERGA HYBRID

It is a hybrid bus that has a good balance of environmental factors and driving performance. The hybrid system is composed of a diesel engine and an electric motor running on lithium-ion battery. Combining the highly efficient diesel engine and MT has realized an efficient and an easy drive.



D-MAX



Made in Thailand, this pick-up truck is driven across 100 countries, making it the most loved 1 t class pick-up truck. The design takes into consider both the looks and aerodynamics. The interior can be chosen out of 3 candidates.

HINO



DUTRO PLUG IN HYBRID

The DUTRO HYBRID has been enhanced so that it can be recharged from outside energy sources. Not only will it recharge when braking, it will be possible to directly charge the battery, increasing efficiency and raising the active rate of the motor.



EV VAN CONCEPT

This is a commercial EV concept model. Since it is quiet and emits less CO2, it is suitable for use inside stores. It carries a compact engine in the front, and as a result, sufficient space were made so that the floor could be lowered to create more space.

MITSUBISHI FUSO



CANTER E-CELL

CANTER E-Cell is a small electric truck, which is based on Canter-3S13—which are sold in the European market – and combined with a lithium-ion battery (40kWh) and a motor (70kWh, maximum torque is 300 Nm). It can travel approximately 120 km after 10 hours of recharging. The total weight is 3.5 t.

CANTER ECO HYBRID



The previous model, which was introduced in 2006, has undergone a model change and will be on sale in the spring of 2012. It will be the first commercial vehicle to have a DCT motor, and by combining this with the lithium-ion battery and diesel engine, it will be very fuel efficient.



UD TRUCKS



QUON WING

It is a large-sized truck using a Urea Selective Catalytic Reduction called "Friends." Emissions are 11 l and have a maximum power at 280 ps with a GH11 engine. In order to promote low-energy driving, 2 GH11 pedals have been placed.

国産
二輪車

JAPANESE MOTORCYCLES

As the motors increase their performance and decrease in size, there is a hint that adaptation of EVs among motorcycles may progress.

HONDA

E-CANOPY

A 3-wheeled EV scooter provides a comfortable and quiet journey. It can be used for personal use, and for business use as well – such as to be used for delivery services. A stylish canopy is also included.



MOTOR COMPO

This EV communicator has efficiently laid out batteries and motors so that it remains compact. It can be put away standing up so as to not take too much space, and it can also be carried in a car. The detachable battery can be used to recharge cell phones too.

RC-E

A sports EV where the battery is set above and below the center of the motorcycle. The motor is set along the swing arm pivot, so by adjusting the weight towards the middle of the motorcycle will heighten operability.



YAMAHA

EC-Miu

It is a concept model which pursues the possibilities electric communicators have in the urban environment. With one wheel in the front and two in the back, it is designed so that it is easy for anyone to operate. Taking care to keep things simple, the size has been kept as small as possible.



XTW 250 RYOKU

This SUV motorcycle has improved the mobility of what 2 wheelers would usually have. The concept of this model is "anywhere, anytime, freely." It has a low gravity balance, slim and light weighted gasoline tank, strong protection, and thick tires which all enhance the performance of this machine.



Y125 MOEGI

Equipped with a global-standard 125 cc engine, this light and slim motorcycle is a pleasure to ride. The mixture of old and new designs makes it easy to become fond of this motorcycle.

PAS WITH

A concept model to show how bicycles can be utilized more. A front hub-in motor is implemented, assisting the pedaling. The body can be folded and compactly put away. By using bicycles together with the other means of transportation, there will be less restrictions from travelling freely.



KAWASAKI

VERSYS1000

This 650 cc middle sports vehicle is the highest raking in its series. Maximum output is 1043 cc, with a 4 cylinder engine, long stroke suspension, and 17 inch road tires.



NINJA ZX-14R

This is the highest class of the sports model Ninja series. The engine capacity has been expanded to 1441 cc, with 4 DOCH engine. A traction control feature "KTRC" and other new technologies will be utilized to make sports and every day usage enjoyable.



SUZUKI

E-LET'S

Using Let's 4 as the base, the engine was replaced with a wheel-in electric motor. Mileage is approximately 30 km after a full charge. The battery can be detached and charged indoors. A spare battery can be stored underneath the seat as well.



GW250

GW250 is a 250cc road bike that has been exhibited at the motorcycle show in Chongqing. The "B-KIBG" was the design motif, and the motorcycle is beautifully formed. It has high power and is built sturdy, and is equipped with an in-line 2 engine which reduces noise and vibrations.





open your mind.



PLUG & PLAY



smart electric drive is coming to Japan in 2012.

smart electric drive

www.smart-j.com

Original information magazine, the "smart STYLE" is given away at the smart stand in the Mercedes-Benz section.

A futuristic concept car, the "smart forvision" is on display, as well.

Also, the smart electric drive is available for test drive at the "SMART MOBILITY CITY 2011" from December 7th (Wed) to 11th (Sun).

smart call : 0120-656-256 hours : 9:30~12:00,13:00~17:30



smart forvision

街、人、暮らしを、
支え続ける。

日本興亜
since 1892

自動車保険は、 「やっぱり」 日本興亜。



24時間365日、どんなときも迅速に対応してくれる。^{*1}「事故にあわれた方の気持ちで」しっかり向き合ってくれる。だから、事故解決に向けたアドバイスから病院への連絡、レンタカーの手配まで安心して任せられる。価格.comの「2011自動車保険満足度ランキング」でもみんなの満足度がNo.1。さすが、私の保険。すごく頼りになるんだね。

おかげさまで皆様から高い評価をいただきました。
これからも、より安心できる保険を目指して努力していきます。ご期待ください。

あなたを全力で支える。



日本興亜損保

*1 事故のご連絡時に、初期対応サービスの要請があった場合。

*2 価格.comの2011自動車保険満足度ランキングより、代理店系損保(通販系商品取扱損保を除きます)内順位を表示。通販系損保を含めた順位は、総合満足度部門5位、コミュニケーションの満足度部門3位、対応の迅速さ部門4位。このほか、初期対応部門2位(5位)*3、対応の的確さ部門2位(5位)*3。*3()内は通販系損保を含めた順位。

上記以外に保険金の認定満足度部門などがありますが、当社の順位は公表されていません。

Eco-Net約款で **ECORaTTa** 増やそうキャンペーン!! 実施中。詳しくはホームページへ。



日本興亜損保は、
エコファースト企業です。



〒100-8965 東京都千代田区霞が関 3-7-3 日本興亜損害保険株式会社 03-3593-3111(代) www.nipponkoa.co.jp

The 42nd TOKYO MOTOR SHOW 2011

日本興亜損保は
第42回東京モーターショー2011を応援しています。

Let's get
the limited model
here!

digimo 1st ed.

Debut!!

@TOKYO MOTOR SHOW 2011



The Beetle × digimo

Check-in and customize your 3D digital plastic models!!

Digimo is here! It's an iPhone app collaborating with The Beetle. You can customize the Beetle with your favorite looks and discover special designs hidden in various locations.

Start out by getting the limited model at the Tokyo Motor Show 2011!



Search on app store

The Beetle × digimo

<http://mydigimo.com>

Contact: INFOBAHN, Inc. info@mydigimo.com

水と生きる **SUNTORY**

誰かのために働く。

BOSS



LOOK FOR THE
4DOOR EXCITEMENT!
AT WEST 1 HALL.



MINI Customer Support 0120-56-5532 WWW.MINI.JP

MINI CROSSOVER. 4DOOR × 4WD.





Exciting Opening Events Held on December 3 (Sat)

Opening Parade

For those fans who have been waiting for the opening of the Tokyo Motor Show 2011, there will be an opening parade on December 3 (Sat), which is the first day open to the public, from 9:00 AM at the Yumeno-Oohashi (Center Promenade). Mr. Terry Ito, a prominent figure in the Japanese entertainment industry, will join the event as a guest.

The parade will consist of about 50 vehicles, and the leading cars of the parade will be driven by the

heads of JAMA member companies. The cars running across the beautiful brick road of the Center Promenade in the morning sunlight and driven by the top executives will be an encouraging sight, carrying a message of Japan's revival and appealing the country's inner strength. The parade will surely be exciting, as it also celebrates the 42nd Tokyo Motor Show coming back to Tokyo for the first time in 24 years.



The parade will be between 9:00 AM to 10:00 AM at the Yumeno-Oohashi (Center Promenade).

Talk Sessions by the Top Executives

As a new initiative, there will be a presentation session by the top executives that will be made open to the public on December 3 from 11:00 AM. It will be held at the stage in the Atrium of the West Exhibition Hall.

In addition to sharing personal

anecdotes about the cars that are memorable to them, speakers will respond to requests and questions collected from visitors by the "mimi car" ("ear car") and talk about various themes.

Mr. Terry Ito, a stage director also known for his enthusiasm of cars, will be the guest speaker. People attending this session will probably make new discoveries about the executives.

Mr. Terry Ito, a stage director who is appearing on various TV programs as a commentator, will draw out honest opinions from the executives.



Mr. Toshiyuki Shiga
Chief Operating Officer
Nissan Motor Co., Ltd.



Mr. Akio Toyoda
President and
Representative Director
Toyota Motor Corp.



Mr. Takanobu Ito
President, CEO and
Representative Director
Honda Motor Co., Ltd.



Mr. Osamu Masuko
President and
Representative Director
Mitsubishi Motors
Corporation

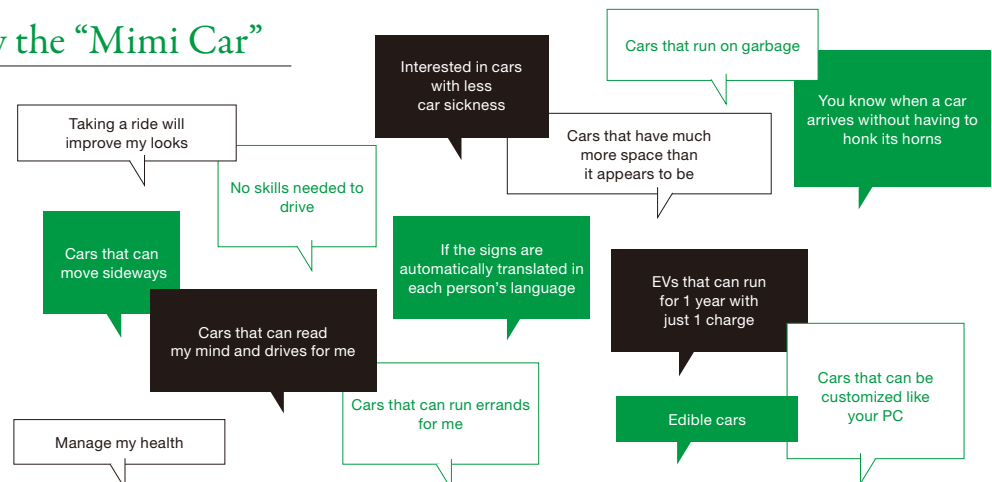


Takashi Yamanouchi
Representative Director and
Chairman of the Board
President and CEO
Mazda Motor Corporation

Don't miss this rare opportunity to hear in person the top executive's comments!

Voices Collected by the "Mimi Car"

In collaboration with the FM radio stations Tokyo FM and J-WAVE, the "Mimi Car" ("ear car") has collected voices from people on the streets. The theme is "what kind of car can save the world?" From realistic to unexpected, the comments are posted in the Atrium.



Hello, I'm "Hcar"
www.mimicar.jp





The 42nd Tokyo Motor Show Begins!

December 2, 2011 (Fri) to December 11 (Sun)

Showcasing the Vitality and Technology of Japan

On March 11, the Great East Japan Earthquake left many parts of the country devastated. So too were the automobile and manufacturing industries, but through unified efforts of the whole industry, normalization was attained in a short period of time. This proved to the world of the country's strengths - high technology level; the robustness of the supply chain; the readiness of the tech industry; and the

diligent nature of the people.

"Mobility can change the world" is this year's theme. Automobiles have now become a solution to issues beyond transportation. This new theme delivers a bright message for the future of the automobile industry, and will surely demonstrate how Japan is recovering. So, let "The 42nd Tokyo Motor Show" begin!

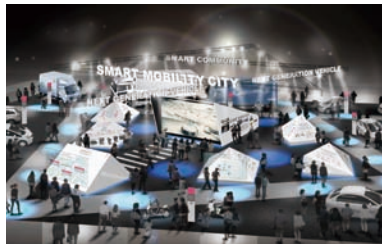


A Glimpse of Special Events During the Show

The World-Leading "Technology Motor Show"

SMART MOBILITY CITY 2011

The organizer will host SMART MOBILITY CITY 2011, held within the venue. It will present a comprehensive view of next generation vehicles and the social systems with which they interact. Manufactures from a wide range of industries - including automobile, energy, housing, power, telecommunications, and ITS - will help us envision how the cities, automobiles, and people will interact in the future.



Test Rides

Auto-pilot demonstrations, passenger car test ride program by professionals' driving, and test rides for next generation motorcycles will take place on the rooftop exhibition area on the 4th floor of the West Exhibition Floor. In West Hall 4, there will be test rides of the Panasonic Vehicle.



The photos are for illustrative purposes only

Collaboration with CEATEC JAPAN 2011

The Tokyo Motor Show stands together with CEATEC JAPAN as "TEAM TECHNOLOGY JAPAN" to support recovery from the Great East Japan Earthquake.



Recovery Aid for the Affected Areas

JAMA member manufactures and United Arrows collaborate to create T-shirts that will be on sale in limited quantities. The proceeds will be donated to relief efforts of the Earthquake. Automobile parts recycled as fashion items and other original items will also be on sale.



Events for Families

There are a variety of events that families can enjoy. SMART MOBILITY CITY 2011 will host a workshop for kids in collaboration with the Panasonic Center. There will also be soap box mini car races and a Tomica Shop set up by TOMY.



Venue in Tokyo

To celebrate the event coming back to Tokyo since it was last held 24 years ago, the organizer and MACHI KYO will host a stamp rally of Disney's new movie "Cars 2." You will receive stamps when you shop at a member shop of MACHI KYO, and when you collect 4, you can redeem a prize. Fireworks will also light up the Odaiba area on the Saturday evenings of December 3, 10, 17, and 24.



Collaboration with the Media

There will be many collaboration events with the media. At the outside parking lot, a Gourmet Food Court will be set up by Fuji TV's "MEZA-MASHI TV" program. There will also be a talk event regarding employment opportunities in the automobile industry by Ms. Hitomi Okazaki, chief editor of RIKUNABI.





Messages From Four Prominent Women

Mobility Can Change the World: Our Voices

The population of women who enjoy driving cars and riding motorcycles are increasing, and four prominent women have given us messages.

COMMENT-1

“My wish is that there will still be cars made that will motivate me”

The look of the car is important, but what's essential is for me to be able to sit behind the wheel with a feeling of security. I am not comfortable when there is a blind spot or when the brakes are too heavy. The first time I drove was when I was 18 – it felt like my life was in a whole new stage. Some people say that it's much easier to take a taxi, but I enjoy the little discoveries I make while driving through town on my own. When the weather is nice, I stuff the car with toys and take the children out. Inside the car is a special space for us. They share with me about a lot of things - like their favorite friends or what they don't like the most.

I think many women – especially mothers – don't really have the luxury to enjoy cars. We tend to choose the most convenient “tool.” However, although it may be less convenient, I want myself to be able to choose style over practicality, and as a reminder, I always keep a MT car at hand. It is my wish that there will still be cars made that makes me feel “I want to keep going so that I can drive that car!”



Violinist

**Chisako
Takashima**

COMMENT-2

“Asking my “smart” car for advice”

Style and acceleration are important when I choose a car. After I started driving, I have gotten more active. Driving helps me forget stressful things, and I think it helps maintain my mental and physical health – except, however, when I am stuck in traffic. I always wondered how it would be like if cars had wings – I think a lot of people do too.

I am interested in cars becoming more and more smarter with IT. It will be very convenient if it is always online and constantly streaming new information, and if I can ask my car for advice on where I should dine tonight, that would be so much fun.

As a person with many hobbies, my car is my very good “friend” – it helps me shape my lifestyle and ways of thinking. I hope many people will enjoy their lifestyle with cars.



TV Personality

**Chisato
Morishita**

COMMENT-3

“Motorcycles are magical vehicles. I want many people to enjoy it.”

Motorcycles are magical vehicles which can make a simple trip into a dramatic journey. It will be a whole new experience for anyone who has never had the chance to ride one yet. You become aware of the various smells - the changing season, the sea, early summer, or the scent of an upcoming rainfall. Riding a motorcycle will make you fall in love with nature, travelling, people, and the country. It is also a “universal language” – you'll easily become friends with a motorcycle enthusiast in Italy, even though you don't speak Italian. It is my wish that more people have the chance to experience journeys on motorcycles, and share my values that it is rewarding to have a favorite pastime.



Essayist

**Ritsuko
Kunii**

COMMENT-4

“Timeless stature of quality”

Ecologically-friendly cars are not just a trend but are here to stay. I hope that one day cars would actually filter and clean the air as they run.

Being ecologically-friendly is important, but I also wish that cars would remain as people's “dreams” and “status.” Quality is timeless, and is something that is always yearned by many. I hope that there would be luxurious cars that people would happily pay for their value. The private atmosphere of the car is very sexy, and provides a romantic setting with someone you love. I am looking forward to a very sweet drive in my dream car.



Model

**Karen
Michibata**



Scenes showing cars in the 22nd century - according to Leiji Matsumoto

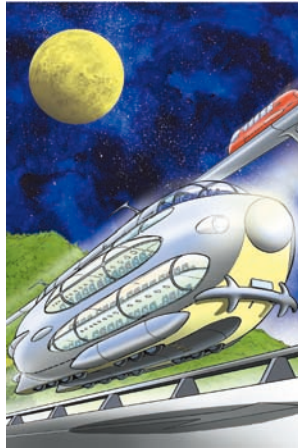
The Tokyo Motor Show News is published daily.

The cover illustrations, drawn by Leishi Matsumoto, will change daily during the show. We hope you enjoy!



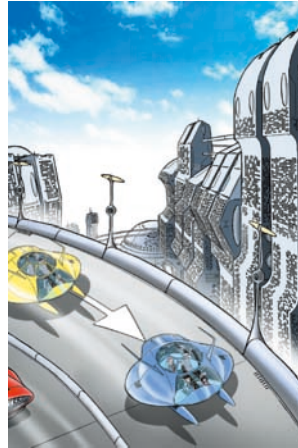
11.30

Cars going through an underground tunnel at high speed. The concept of "lanes" has been abolished and cars can go from side to side and up and down, but safety is ensured by radars that maintain a constant distance between vehicles.



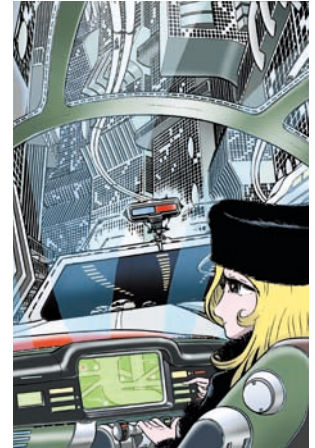
12.01

A large bus with a carrying capacity of over 300 passengers. These are extremely popular due to their internal comfort and the network of convenient stations. Their driving is controlled by the Control Lines.



12.02

City commuters that are levitated by Guide Antennae mounted in street lights. There are highly-advanced tires stored in the two floats underneath the body.



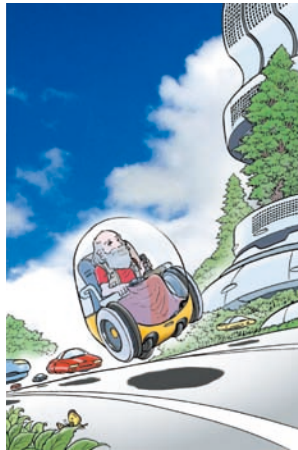
12.03

The only time the driver needs to touch the control lever is when parking or driving down an alleyway. If the driver starts talking to the navigation system then automatic driving will be re-enabled.



12.06

A large truck going through a mountainous area. As road conditions do not affect the antigravity levitation system, vehicles can even travel through undeveloped lands. The heavier the load is, the more powerful the vehicle becomes.



12.07

Electric mobility scooters provide safe transportation on expressways. Canopies can be easily detached. You can go into shops including convenience stores without getting out.



12.08

As the operation of all vehicles is fully automated, there will be no traffic jams. As the antigravity levitation system is not radio-controlled, there is also no impact on human health.



12.09

A classic-style motorbike with a vertical gyroscope and horizontal stabilizer. The stabilizer is equipped with an obstacle sensor that prevents crashes.

©2011 Leiji Matsumoto
Leiji Matsumoto
Leiji Matsumoto



Leiji Matsumoto

Manga artist
Born in Kurume, Fukuoka.
Matsumoto won the 1st Chohen Manga Shinjinsho (New Artist Award for Long Stories) from Manga Shonen. His renowned works include "Galaxy Express 999", "Space Battleship Yamato", "Captain Harlock" and many others.
He is currently the Chair of the Young Astronauts Club Japan and a prominent advocate for the National Space Development Agency of Japan.

Creating a mobile society where everyone can enjoy safety and convenience



12.04

Bikes are very popular as a simple means of transport. They can also go over rivers without bridges thanks to the antigravity levitation system. You can travel home while working on your tablet.



12.05

There is a strong infatuation for cars from the 20th century too and retro-designed vehicles are treated with respect. Metal-effect bumpers and grooved tires are popular decorative accessories.



12.10

Ambulances do not levitate but travel on roads which prioritize the transport of patients to hospital. They are fully equipped with medical facilities sufficient to undertake operations on board. Police cars have combat capabilities equal to those of tanks.



12.11

Transport vehicles that can carry cranes in place of caterpillars. When the antigravity levitation system is reversed, it renders building equipment heavier and more stable than under normal gravity. This has led to accelerated reductions in the general weight of building equipment.

2012 calendar with the illustrations are on sale

At the official goods shop in the venue, the calendars are available at 630 yen (taxes included). Proceeds will be donated to charity to support recovery efforts from the earthquake.

Since its invention in the 19th century, the automobile has been continually evolving. By the end of the 21st century, the idea of rotating tires using oscillating energy generated by motors has become obsolete and cars are now powered using perpetual thrust force generated by air resistance or thermal energy. In the 22nd century, we will be able to drive cars using accumulated potential energy.

Yes, this means an antigravity levitation system has been developed. The idea is very simple. The invention makes objects float in the air by balancing the gravity of the Earth against the gravities from other planets in the Solar System. This system could only be used for cars because of a significant reduction in the weight of the body of the car. Extremely heat-resistant and elastic materials were invented by mixing a special resin, not with metals, but with paper or plant fiber. These materials can be molded into any form and do not need to be painted. Once coated with a special film they block ultraviolet rays, change the brightness of the interior freely, and create many other effects. The tires mounted on the body are used to stabilize the car when driving in alleyways and when backing into a parking space. They also have highly advanced technologies to ensure safety in emergencies and natural disasters.

With the invention of the antigravity levitation system, surfacing roads has been significantly simplified. Roads are no longer paved with tarmac or concrete, reducing costs and causing far less damage to the natural environment. What are required instead are Control Lines that are buried in roads and Guidance Antennae including road illuminations. The antigravity levitation system can sometimes forego bridges. Of course it does not allow cars to float on the sea, as cars are not built as water vehicles. But the system enables cars to run above water for a few miles.

Car driving is completely automated and all drivers have to do is talk to the car navigation system. If the driver tells the navigation system the destination, it will automatically calculate the best route to take and get passengers there safely. However, the driver can still experience the pleasure of driving once the automatic driving is turned off. The driving process does not consist of deciding when to steer, brake and change gears, but is determined by the driver's brainwaves whose image is read by a sensor. Needless to say, safety is absolutely guaranteed even with manual driving.

Mobility in the 22nd century has completely changed including for large vehicles. Transportation is safer, friendlier to the environment and continues to play a great social role by bringing us the products that satisfy a variety of our desires.



Press Briefing Schedule

November 30

11 / 30

wed.

Time	Host	Place
East Exhibition Hall		
08:30 - 08:45	MAZDA マツダ	East 1-2
08:45 - 09:00	NISSAN 日産	East 2-3
09:15 - 09:30	RENAULT ルノー	East 2
09:15 - 09:30	SUBARU スバル	East 3
09:30 - 10:00	MERCEDES-BENZ / MAYBACH / smart / AMG メルセデス・ベンツ/マイバッハ/スマート/AMG	East 3
10:00 - 10:15	MITSUBISHI-FUSO 三菱ふそう	East 2-3
10:00 - 10:30	HONDA ホンダ(四輪+二輪)	East 5-6
10:30 - 10:45	MITSUBISHI 三菱	East 4
10:45 - 11:00	VOLKSWAGEN フォルクスワーゲン	East 4-5
11:00 - 11:15	AUDI アウディ	East 4
11:15 - 11:30	PORSCHE ボルシェ	East 4
11:30 - 11:45	LOTUS ロータス	East 5
13:45 - 14:00	SUZUKI スズキ(四輪+二輪)	East 5
14:00 - 14:15	KAWASAKI 川崎	East 5
14:15 - 14:30	YAMAHA ヤマハ	East 5-6
West Exhibition Hall		
11:30 - 12:00	TOYOTA / LEXUS トヨタ/レクサス	West 2
12:00 - 12:15	DAIHATSU ダイハツ	West 2
12:15 - 12:30	BMW BMW	West 1
12:30 - 12:45	MINI MINI	West 1
12:45 - 13:00	ALPINA アルピナ	West 1
13:00 - 13:15	PEUGEOT プジョー	West 1
13:15 - 13:30	CITROËN シトロエン	West 1
13:30 - 14:00	JAGUAR / LAND ROVER ジャガー/ランドローバー	West 1

December 1

12 / 1

thu.

Time	Host	Place
East Exhibition Hall		
09:15 - 09:30	Continental コンチネンタル	East 3
09:35 - 09:50	Schaeffler シェフラー	East 3
09:55 - 10:10	Bosch ボッシュ	East 3
10:15 - 10:30	Campagna Motors Japan カンパーニャ	East 3
10:35 - 10:50	Bridgestone ブリヂストン	East 2
10:55 - 11:10	The Yokohama Rubber 横浜ゴム	East 2
11:15 - 11:30	Sumitomo Rubber Industries 住友ゴム	East 2
11:35 - 11:50	Toyota Auto Body トヨタ車体	East 2
11:55 - 12:10	HYUNDAI ヒュンダイ	East 1
12:15 - 12:30	ISUZU いすゞ	East 1
12:35 - 13:10	UD Trucks / VOLVO Trucks UDトラックス/ボルボトラックス	East 1
13:15 - 13:30	HINO 日野	East 1
13:15 - 13:30	Radical Sportscars ラディカル	East 4
13:35 - 13:50	TS Tech ティ・エス テック	East 4
13:55 - 14:10	Toyota Boshoku トヨタ紡織	East 5
14:15 - 14:30	Mitsubishi Electric 三菱電機	East 6
14:35 - 14:50	Hitachi Automotive Systems 日立オートモティブシステムズ	East 6
14:55 - 15:10	Denso デンソー	East 5
15:15 - 15:30	Yazaki ヤザキ	East 6
15:35 - 15:50	Toyota Industries 豊田自動織機	East 6
West Exhibition Hall		
09:15 - 09:30	Nihon Automobile College NATS 日本自動車大学校	West 3
09:35 - 09:50	Kowa Tmsuk 興和テムザック	West 3
09:55 - 10:10	Takayama Cars 高山自動車	West 3
10:15 - 10:30	Smile Park / SunnySide Garage スマイルパーク/サニーサイドカーズ	West 3
10:35 - 10:50	SMC2011 Steering Committee SMC2011実行委員会	West 4
10:55 - 11:10	LIXIL LIXIL	West 4
11:15 - 11:30	ecomo ecomo	West 4
11:35 - 11:50	SIM-Drive SIM-Drive	West 4
11:55 - 12:10	Japan LPG Vehicle Promotion Association LPガス自動車普及促進協議会	West 4
12:15 - 12:30	Internet ITS Consortium インターネットITS協議会	West 4
12:35 - 12:50	Toray Industries 東レ	West 4
12:55 - 13:10	TOYOTA トヨタ	West 4
13:15 - 13:30	Asahi Glass 旭硝子	West 4
13:35 - 13:50	Hitachi 日立製作所	West 4
15:55 - 16:10	Aisin Group アイシングループ	West 1
16:15 - 16:30	NTN NTN	West 1
16:55 - 17:10	NHK Spring 日本発条	West 1
17:15 - 17:30	Jatco ジャトコ	West 1



“Press Service”

Located on the 6th floor of the Conference Tower, the Press Center is equipped with work desks with LAN cables. Wireless LAN is available throughout the Press Center. There is a photographer's desk, where you can process and send out digital photographs and copy onto DVD media. Access to the facility and the services are controlled by the press card which you have registered.

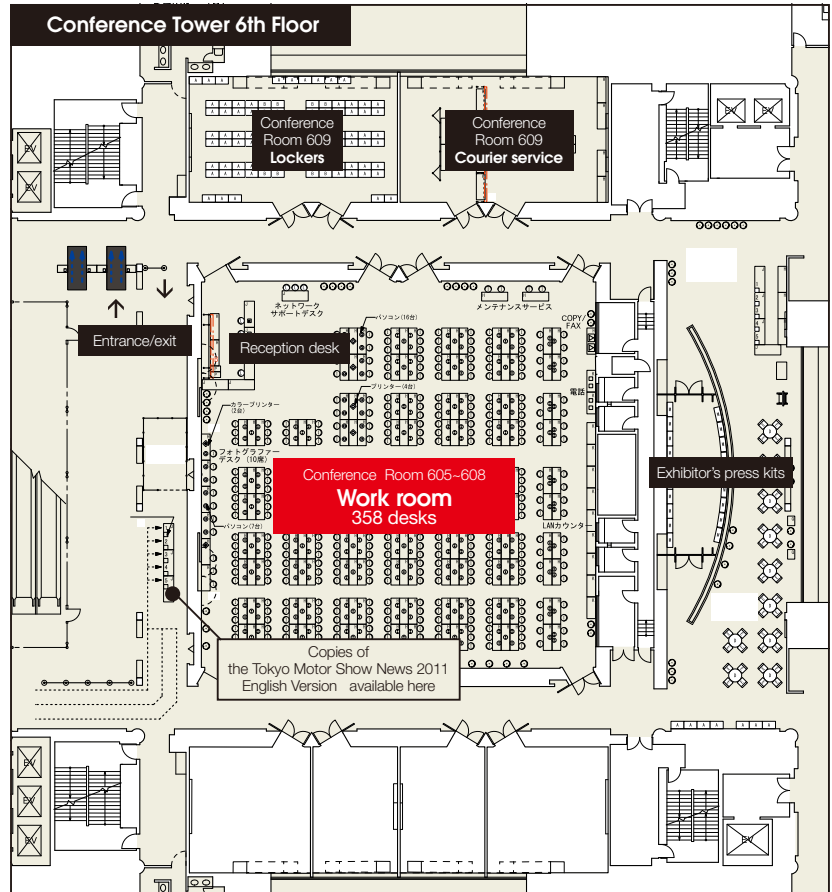
Main facilities [Nov 30 (Wed) to Dec 1 (Thu)]

- Work desk: 356 seats (all non-smoking)
- Photographer's desk: 10 seats
- Lounge: 36 seats Lockers: 624
- Computers: 24 Printers: 6
Photo color printers: 2
Copy/FAX: 4 Telephone: 6

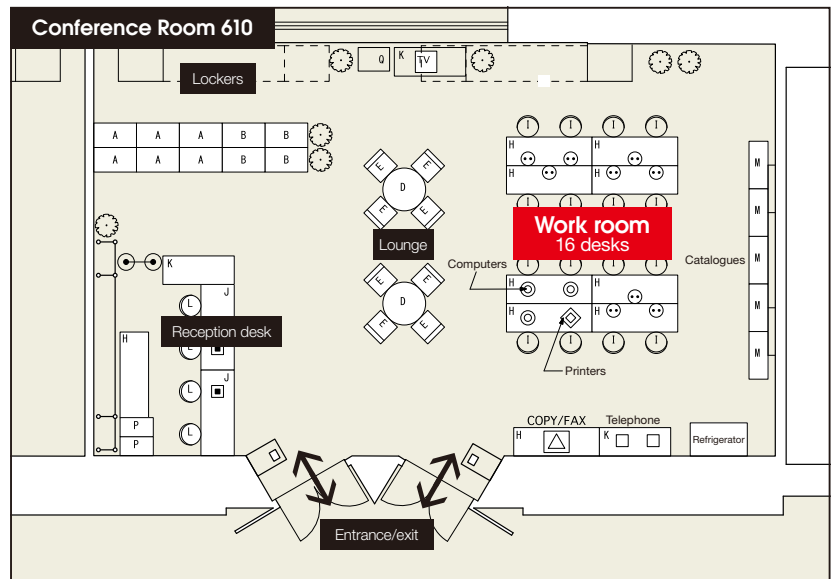
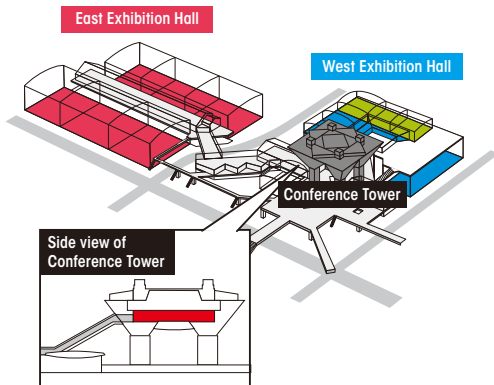
Services

- HUB (to connect to LAN) available at all seats
- Camera maintenance service
- View recording of press briefing DVD
- Domestic and international courier service (1 time free per person, up to 20kg)
- Drink service
- Distributing press releases by placing them on the catalog shelf

Press Center Press Day [November 30 (Wed) to December 1 (Thu)]



Press Center Special Invitation Day/ Public Opening Day [December 2 (Fri) to December 11 (Sun)]





1 Hotel Nikko Tokyo
10% off restaurant and bar

Access directly from Daiba station. All rooms have balconies that reminds you of a tropical resort. All rooms have spectacular views of the major landmarks of Tokyo, such as the Rainbow Bridge and Tokyo Tower – all of which is available at 10% off.

Hours Lunch 11:30 to 14:30 / Dinner 17:30 to 21:30
*Hours may vary for some restaurants

Access Yurikamome (Daiba Station) direct access
Rinkai Line (Tokyo Teiport Station) 7 minute walk



2 Aqua City Odaiba Mediage
Exchange for "Nice Coupons"

Located near the Odaiba Kaihin Park is Tokyo's resort island "Aqua City Odaiba Mediage." If you present this guidebook to the information counter (open until 21:00), you will receive a "Nice Coupon" which you can use within the facility. *For details, please see the "Nice Coupon"

Hours Shops & food court 11:00 to 21:00 / Restaurants 11:00 to 23:00
Mediage 11:00 to 23:00 (open all night Saturday)

Access Yurikamome (Daiba Station) 1 minute walk
Rinkai Line (Tokyo Teiport Station) 6 minute walk



3 DECKS Tokyo Beach & Tokyo JOYPOLIS
Exchange for "DECKS Premium Card"

"DECKS Tokyo Beach" is THE entertainment spot. Present this guidebook to the information counter at the Seaside Mall (open until 21:00) to redeem your "DECKS Premium Card." You will get a 20% discount on admissions to Madame Tussauds too!
*For details, please see the "DECKS Premium Card" service list

Hours 11:00 to 21:00 / Restaurants 11:00 to 23:00
Tokyo JOYPOLIS 11:00 to 23:00 (last entry at 22:15)

Access Yurikamome (Odaiba Kaihin Koen Station) 2 minute walk
Rinkai Line (Tokyo Teiport Station) 5 minute walk



4 Hotel Grand Pacific LE DAIBA
10% off all restaurants and bars!

A city resort located just 15 minutes away from the center of Tokyo, the Grand Pacific LE DAIBA presents spectacular sights of Tokyo, such as the Tokyo Tower and the Tokyo Skytree®. Choose from a variety of cuisines including Japanese, European, Chinese, and teppan yaki, or take a break in the coffee shop or bar. Receive 10% off at all the 7 restaurants by presenting this guidebook.

Hours Lunch 11:30 to 14:30 / Dinner 17:30 to 21:00 / Bar: to 24:00
*Hours may vary for some restaurants

Access Yurikamome (Daiba Station) direct access
Rinkai Line (Tokyo Teiport Station) 10 minute walk



5 Fuji TV_ 20% off admissions to the observatory "Hachitama"

Present this guidebook to receive 20% off admissions to Fuji TV's symbolic observatory "Hachitama." Enjoy the 270 degrees panorama of the bay area from 123.45 m above ground.

Hours 10:00 to 18:00 (last entry is 30 minutes before closing)
Open every day except for Monday

Access Yurikamome (Daiba Station) 3 minute walk
Rinkai Line (Tokyo Teiport Station) 5 minute walk



6 Daiba Frontier Building_ Receive discounts from shops within the building!

Shops are prepared to give you discounts such as free drink bars and 1000 yen discounts when dining with over 3 people. Details are available at shop entrances. At the Shell Museum, there will be a 10% discount for Shell and Ferrari goods.

Hours Warawara: 17:00 to 5:00 / CRUX Kafco 7:30 to 19:00; Sat 12:00 to 18:00; closed Sundays / Tokyo Kushi Ya 11:00 to 15:00; 17:00 to 23:00 / Shell Museum 10:00 to 20:00; Sundays and holidays 11:00 to 18:99; closed Saturdays

Access urikamome (Odaiba Kaihin Koen Station) 1 minute walk
Rinkai Line (Tokyo Teiport Station) 3 minute walk

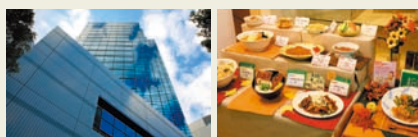


7 the SOHO Cafe & Dining Discount at "the Canteen" for lunch and dinner

"the SOHO" is one of the largest SOHO office building and is excellent in design. Receive 100 yen off the lunch menu, and 10% off when you use 2000 yen or more for dinner at "the Canteen" located on the 1st floor.

Hours Lunch 11:30 to 16:00 / Dinner 17:30 to 22:00 (last order 21:30) Weekdays 10:00 to 22:00/ Saturdays 10:00 to 18:00 / closed Sundays (tel. 03-5530-0261)

Access Yurikamome (Telecom Center Station) 5 minute walk
Yurikamome (Fune no Kagakukan Station) 5 minute walk

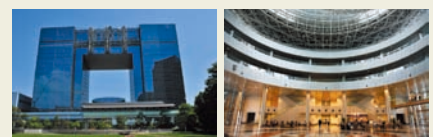


8 Aomi Frontier Building Cafeteria
Free servings at the "Greens Chef"

The Cafeteria "Greens Chef" seats 130 people in the business center of Aomi. If you order a set lunch (11:30 to 14:00), you can receive free servings of rice and miso soup. Don't hesitate to come if you are really hungry.

Hours Lunch 11:30 to 14:00; closed Saturdays and Sundays

Access Yurikamome (Telecom Center Station) 1 minute walk



9 Telecom Center Building Discounts on the observatory and restaurants

Discounts are available at 7 the restaurants – including soba, Japanese cuisine, Chinese cuisine, and izakayas) – and cafe. Details are available at shop entrances. Admissions to the observatory with a dramatic nightscape will be discounted 100 yen. Restaurants within the observatory will also provide discounts.

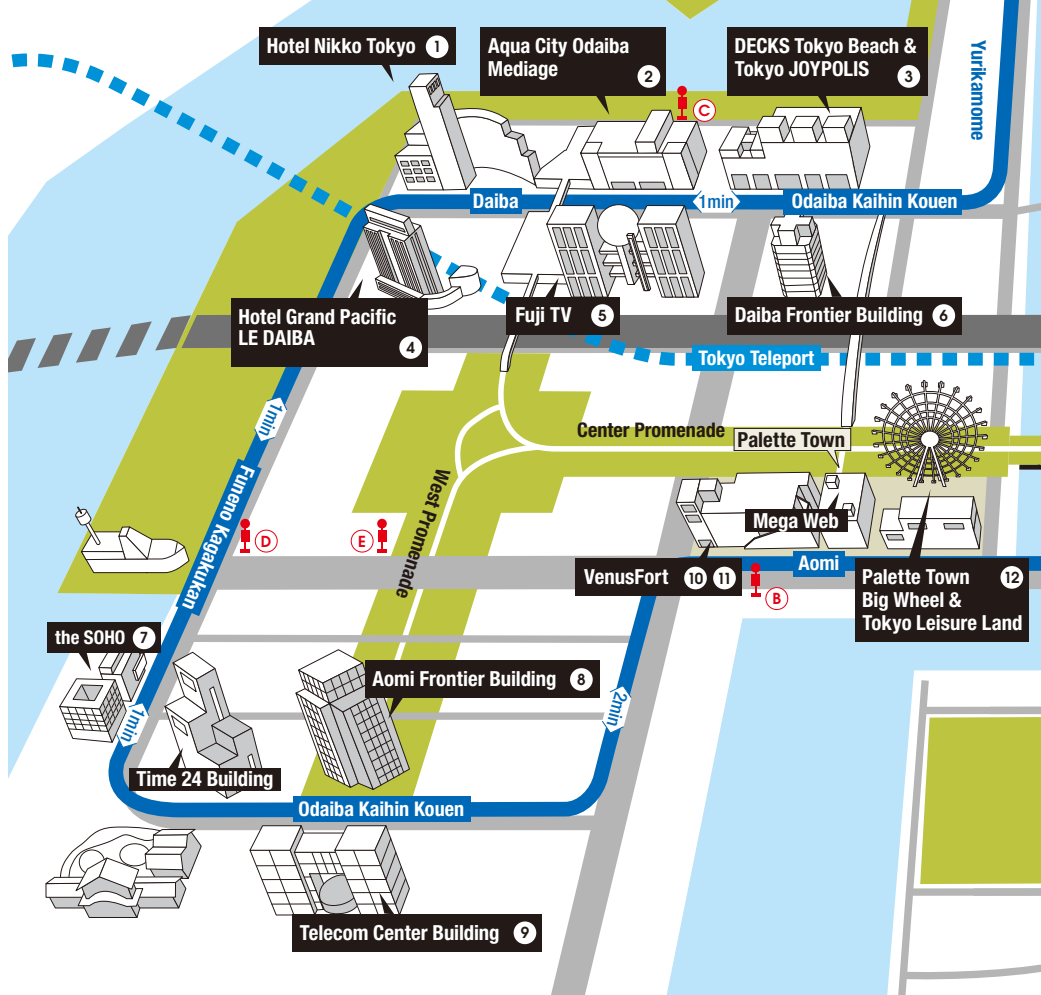
Hours Lunch 11:00 to 15:00 / Dinner 17:00 to 22:00
*Hours may vary for some restaurants

Access Yurikamome (Telecom Center Station) 1 minute walk

Show your copy of the TOKYO MOTOR SHOW NEWS!

TOKYO WATERFRONT AREA MAP FOR DISCOUNT COUPONS

The Tokyo Waterfront Area (Rinkai Fukutoshin), where the Tokyo Big Sight is located, has many spots that you can enjoy. The facilities located in the area have prepared special discounts for visitors of the Tokyo Motor Show.





10 VenusFort_ Receive your "Gourmet Coupon" & see the "Wolves of the Circuit" exhibit

VenusFort is a theme park type of a mall recreating an European town between the 17th to 18th century. Present this guidebook at the information desk on the 2nd floor to redeem your "Gourmet Coupon" which can be used at the cafe and restaurants. Be sure to check out the "Wolves of the Circuit" exhibit where there are many supercars and other classic cars on display.

Hours Shops 11:00 to 21:00 / Restaurants 11:00 to 23:00 (last order 22:00)
*Please see the "Gourmet Coupon" for details

Access Yurikamome [Aomi Station] direct access
Rinkai Line [Tokyo Teiport Station] 3 minute walk



11 MEGA WEB HISTORY GARAGE 10% off Japanese model cars at "Grease"

Located within the HISTORY GARAGE at VenusFort, Grease is Tokyo's largest model car shop. Present this guidebook to receive 10% off Japanese car models. You can also stop by the ALESSANDRO NANNINI Caffe where you can enjoy a cup of coffee while enjoying the view of mini cars and classic cars. The "Fun Cart Ride" is a cart ride that can be enjoyed from kids of elementary school and older.

Hours Shops 11:00 to 21:00
*Fun Cart Ride 11:00 to 17:00

Access Yurikamome [Aomi Station] direct access
Rinkai Line [Tokyo Teiport Station] 3 minute walk



12 Palette Town_ Discount on Ferris wheel tickets and Tokyo Leisure Land bowling and Karaoke

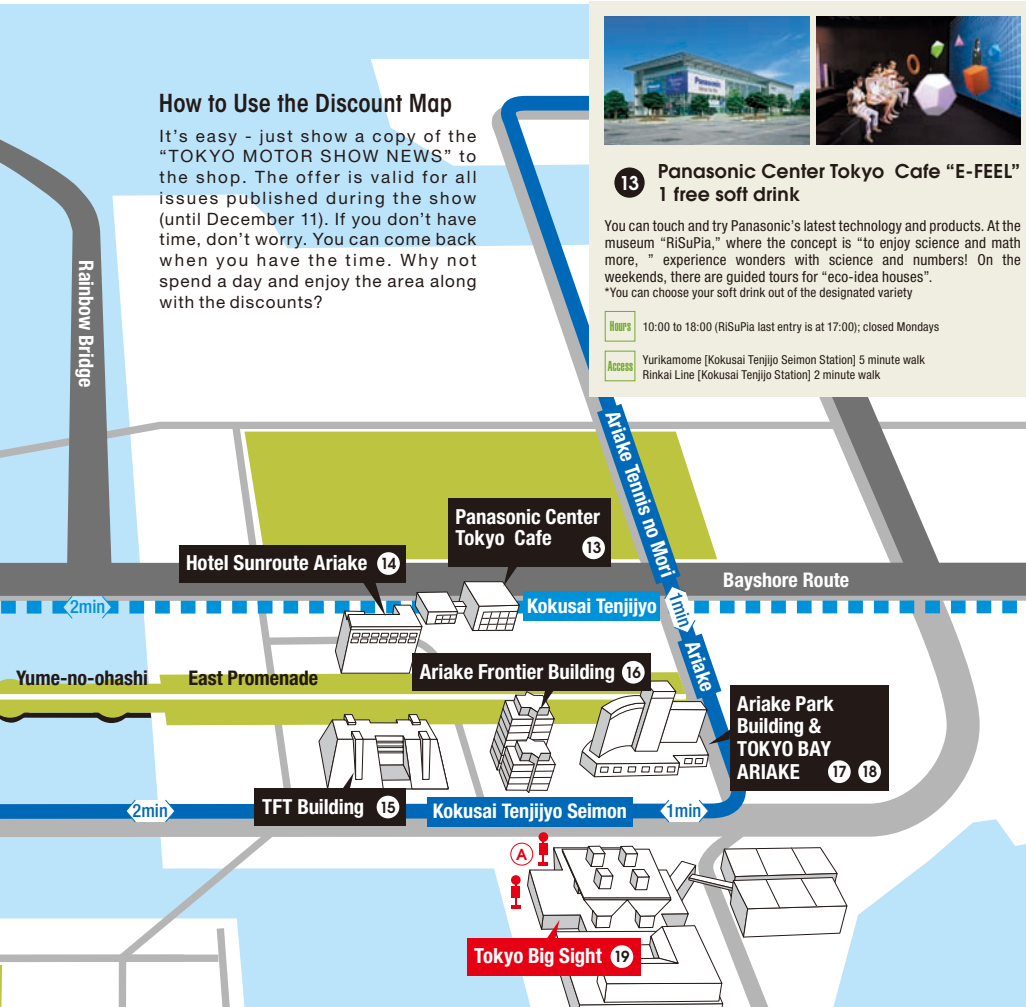
Tickets to the Ferris wheel standing 115m above ground with a view of the sea and Tokyo: 900 yen *700 yen (excluding the see through gondola; up to 4 may receive discount)
100 yen discount per game for bowling at Tokyo Leisure Land (*rental shoes are 300 yen; up to 4 may receive discount); 20% off room charge for karaoke (*1 drink order necessary)

Hours Ferris wheel 11:00 to 22:00 (Friday and Saturday to 23:00, closes during bad weather) / Tokyo Leisure Land bowling 24h; karaoke 13:00 to 6:00 (last admission 5:00) / game corner (3rd floor) 10:00 to 23:50 *Fun Cart Ride 11:00 to 17:00

Access Yurikamome [Aomi Station] direct access
Rinkai Line [Tokyo Teiport Station] 3 minute walk

How to Use the Discount Map

It's easy - just show a copy of the "TOKYO MOTOR SHOW NEWS" to the shop. The offer is valid for all issues published during the show (until December 11). If you don't have time, don't worry. You can come back when you have the time. Why not spend a day and enjoy the area along with the discounts?



13 Panasonic Center Tokyo Cafe "E-FEEL" 1 free soft drink

You can touch and try Panasonic's latest technology and products. At the museum "RiSuPla," where the concept is "to enjoy science and math more," experience wonders with science and numbers! On the weekends, there are guided tours for "eco-idea houses". *You can choose your soft drink out of the designated variety

Hours 10:00 to 18:00 (RiSuPla last entry is at 17:00); closed Mondays

Access Yurikamome [Kokusai Tenjiyo Seimon Station] 5 minute walk
Rinkai Line [Kokusai Tenjiyo Station] 2 minute walk

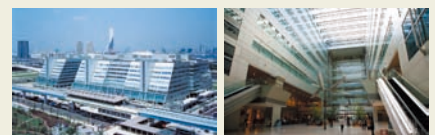


14 Hotel Sunroute Ariake_ 1 drink free at dinner at restaurant "Sousai Patio"

The concept at Sousai Patio is "food that is good for you," and provides a mix of Japanese and western tastes in the menu. Be sure to try the house brewed beer made in Yokohama. (* 1 drink free is at dinner only)

Hours Morning 6:30 to 10:30 (- 10:00) / Lunch 11:30 to 14:30 (- 14:00) / Dinner 17:00 - 23:00 (Sundays until 22:00) *Hours may vary for some restaurants

Access Yurikamome [Kokusai Tenjiyo Seimon Station] 3 minute walk
Rinkai Line [Kokusai Tenjiyo Station] 3 minute walk

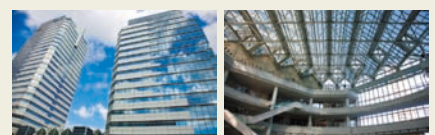


15 TFT Building (Wanza Ariake Bay Mall) 1 drink free & 10% off

[1 drink free after 17:00] Chao: soft drink; Fukadon: medium sized draft beer or soft drink; Suen: draft beer; Akitsu: sake highball or whiskey highball; Funachu, Kaminari Usagi, and Hoozukiya: glass draft beer, sour, or oolong tea; Souzai no Mokuu: medium sized draft beer, sour, or oolong tea; Tsukiji Shokudo Genchan: glass draft beer; Takerokusukekoubou (17:00-), Pronto (17:30-): 10% off when spending 3150 yen per person or more.

Hours Lunch 10:00 to 15:00 / Dinner 17:00 - 23:00
*Hours may vary for some restaurants

Access Yurikamome [Kokusai Tenjiyo Seimon Station] 1 minute walk
Rinkai Line [Kokusai Tenjiyo Station] 5 minute walk

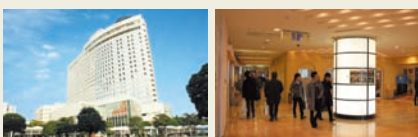


16 Ariake Frontier Building Discounts at restaurants and cafes within the building

Izakaya "Chimney": 1 person free when ordering a course for 10 persons or more / Chinese "Shunka Shujitsu": 10% off lunch, 10% off a la carte, 1 person free when ordering a course for 10 persons or more / Japanese "Shunyu Tei": 10% off dinner. Details are available at restaurant entrances.

Hours Chimney: Mon to Fri 11:30 to 23:00, Sat and Sun 16:00 to 23:00 / Cafe Veloce 7:30 to 21:00 / Shuka Shujitsu 11:00 to 15:00, 17:00 to 22:00 / Shunyu Tei 11:30 to 14:00, 17:00 to 22:30, closed Sundays

Access Yurikamome [Kokusai Tenjiyo Seimon Station] direct access
Rinkai Line [Kokusai Tenjiyo Station] 3 minute walk



17 Ariake Park Building 1 free glass beer after 17:00

1 free glass beer after 17:00 at the following restaurants: "Nakamura Kome Ariake," "Trattoria Al Porto," "Bistro Café La Rochelle," "Grâce de Mer," "Washoku Dining Soba Tagui," "Sumibi Kushiyaiki Maharani," "Chuka Katei Ryori Rakuen," and "Seafood Restaurant Mehico."

*Cannot be used together with other coupons

Hours Lunch 11:00 to 15:00 / Dinner 17:00 to 23:00
*Hours may vary for some restaurants

Access Yurikamome [Kokusai Tenjiyo Seimon Station] 2 minute walk



18 TOKYO BAY ARIAKE WASHINGTON HOTEL_ 10% off from 2 restaurants located on the upper floors

Receive 10% off at the Japanese cuisine "Sanju Sangen Do" on the 21st floor, and at "China Grill MADAM XENLON" on the 20th floor. Enjoy the wonderful night view of Tokyo bay.

Hours Sanju Sangen Do: Lunch 11:30 - (last order 14:00), Dinner 17:00 to 22:30 (last order 22:00) / MADAM XENLON: 11:30 to 22:00 (last order 21:30)

Access Yurikamome [Kokusai Tenjiyo Seimon Station] 2 minute walk
Rinkai Line [Kokusai Tenjiyo Station] 2 minute walk



19 Tokyo Big Sight_ 1 drink free after 15:00 at "RISTORANTE TREVI"

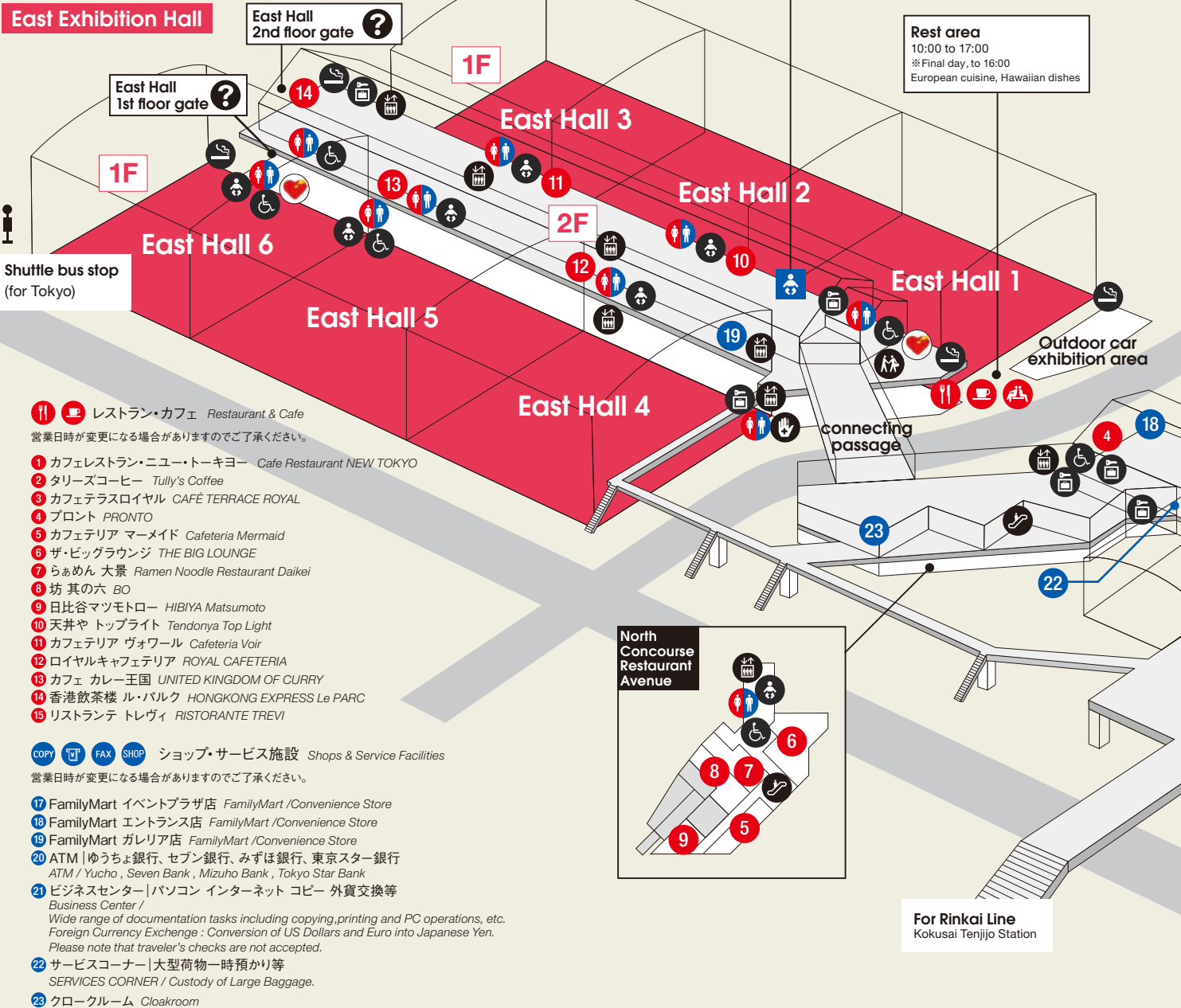
RISTORANTE TREVI, located on the 8th floor of the Conference Tower, is having a "Christmas Night Fair" after 15:00 during the show. Receive 1 drink free by presenting this guidebook (orange juice, oolong tea, coffee, or glass wine). *Cannot be used together with other coupons

Hours 11:00 to 21:30 *until 20:00 on Dec 4 (Sun) and Dec 11 (Sun). Last order is 30 minutes before closing. *Open for lunch until 15:00 on Dec 8 (Thu)

Access Tokyo Big Sight Conference Tower 8th floor (please use the elevator on the 2nd floor)

TOKYO BIG SIGHT MAP

East Exhibition Hall



Infant Service Center (1F)
 Dec. 2 (Fri) (Special Guest Day) 12:30 - 18:00
 Dec. 3 (Sat) - Dec. 11 (Sun)
 Monday - Saturday 10:00 - 20:00
 Sunday (except Dec. 11) 10:00 - 18:00
 Dec. 11 (Sun) 10:00 - 17:00

Rest area
 10:00 to 17:00
 ※ Final day, to 16:00
 European cuisine, Hawaiian dishes

レストラン・カフェ Restaurant & Cafe
 営業日時が変更になる場合がありますのでご了承ください。

- 1 カフェレストラン・ニュー・トーキョー Cafe Restaurant NEW TOKYO
- 2 タリーズコーヒー Tully's Coffee
- 3 カフェテラスロイヤル CAFÉ TERRACE ROYAL
- 4 プロント PRONTO
- 5 カフェテリア マーメイド Cafeteria Mermaid
- 6 ザ・ビッグラウンジ THE BIG LOUNGE
- 7 らあめん 大景 Ramen Noodle Restaurant Daikei
- 8 坊 其の六 BO
- 9 日比谷マツモトロー HIBIYA Matsumoto
- 10 天井や トップライト Tendonya Top Light
- 11 カフェテリア ヴォワール Cafeteria Voir
- 12 ロイヤルカフェテリア ROYAL CAFETERIA
- 13 カフェ カレー王国 UNITED KINGDOM OF CURRY
- 14 香港飲茶楼 ル・パルク HONGKONG EXPRESS Le PARC
- 15 リストランテ トレヴィ RISTORANTE TREVI

コピー FAX SHOP ショップ・サービス施設 Shops & Service Facilities
 営業日時が変更になる場合がありますのでご了承ください。

- 17 FamilyMart イベントプラザ店 FamilyMart /Convenience Store
- 18 FamilyMart エントランス店 FamilyMart /Convenience Store
- 19 FamilyMart ガレリア店 FamilyMart /Convenience Store
- 20 ATM | ゆうちょ銀行、セブン銀行、みずほ銀行、東京スター銀行
ATM / Yucho, Seven Bank, Mizuho Bank, Tokyo Star Bank
- 21 ビジネスセンター | パソコン インターネット コピー 外貨交換等
Business Center /
Wide range of documentation tasks including copying, printing and PC operations, etc.
Foreign Currency Exchange : Conversion of US Dollars and Euro into Japanese Yen.
Please note that traveler's checks are not accepted.
- 22 サービスコーナー | 大型荷物一時預かり等
SERVICES CORNER / Custody of Large Baggage.
- 23 クロークルーム Cloakroom

Here are the must-see events at the 42nd Tokyo Motor Show!

□ WORLD FOOD CUP

Alligators for lunch?

Fuji TV's morning program "Mezamashi TV" supports the "WORLD FOOD CUP." Try the delicacies brought here from around the globe, and vote for your favorite! There will be 8 regions: North America, Latin and South America, Africa, Oceania, Europe, Asia, South Eastern Asia, and Japan. 1 country will be chosen to represent each region, and there will be a special kitchen car for each. You will receive a sticker to vote for your favorite country. Enjoy this rare opportunity to try exotic menus and soul foods of various countries.



□ Tokyo Motor Show Fashion Shop

Proceeds will be donated to earthquake relief

The automobile and fashion industries have stood up to live up Japan. The Tokyo Motor Show, domestic automobile manufacturers, and United Arrows have collaborated to produce charity T-shirts available in limited numbers, which will be sold in West Hall 3. Proceeds will be donated to earthquake relief charities. Other items on sale include items that will enrich your car life, including fashion items made of recycled products. Talk shows will take place on the stage nearby.



□ Stage Events

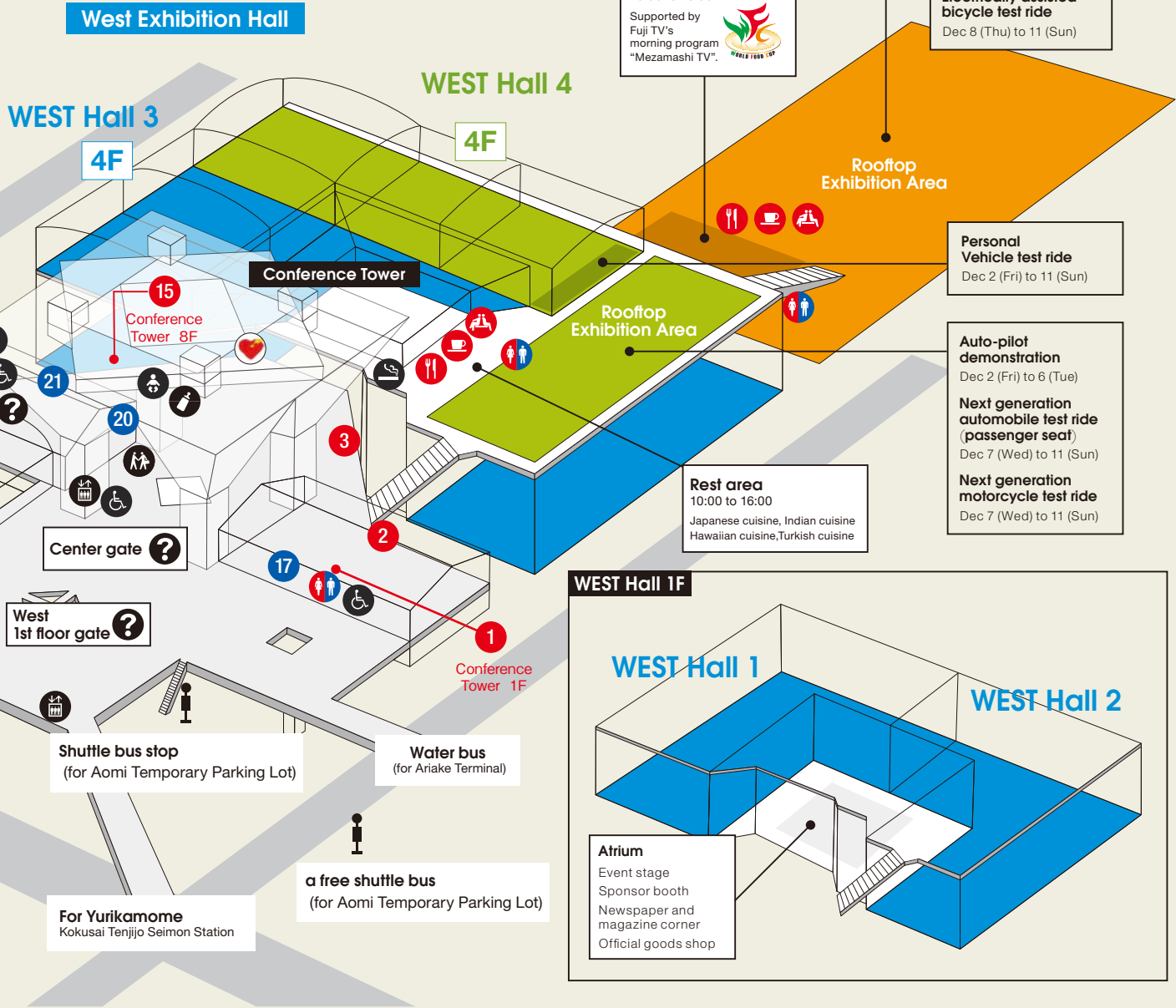
Exciting stage events

The main events will take place on the stage in the Atrium of the West Event Hall. Mr. Terry Ito will moderate a talk session by the 5 top executives of Japanese automobile manufacturers on December 3. There will be a public recording of Fuji TV's "ANA-BANG", a talk show by F-1 racer Kamui Kobayashi, and a public recording of TOKYO FM's "Syncro-no-City". Another exciting event will be the awarding of 2011-2012 Car of the Year Japan. There will be a talk event by the chief editor of RIKUNAVI about job opportunities, and by DJ Piston Nishizawa themed "everyone's motor show." CLPIS, an internet-broadcasting student group, will also perform on stage. Be sure you do not miss the excitement!

- インフォメーション INFORMATION
- 待ち合わせコーナー Meeting Point
- エレベーター Elevator
- エスカレーター Escalator
- 化粧室 Restroom
- 身障者用施設 Accessible Facility

- 乳幼児用施設 Nursery
- 授乳室 Nursing Room
- コインロッカー Coin Lockers
- 喫煙場所 Smoking Area
- 救護室 First Aid
- AED 自動体外式除細動機
AED / Automated External Defibrillator

- レストラン・カフェ・休憩ゾーン
Restaurant & Cafe, Rest Zone
- ショップ・サービス施設
Shops & Service Facilities



Official Goods & Exhibitor Premium Goods

Products are also available online

Official goods imprinted with the Tokyo Motor Show logo, such as key holders, mug cups, and hand towels, will be sold. The items on sale include solar LED lights, glow-in-the-dark pens, and bags made of recycled tires, and exhibitor premium goods (at the shop in East Hall 4 only). You can also make commemorative coins in the work-shop. If you forgot to stop by, some items are available online! Accessing the page from the QR code.



Tomica Corner

Make your original Tomica at the "Tomica Factory"

The Tomica Corner, sponsored by TOMY COMPANY, has been very popular among children since it first appeared at the 35th show to sell mini cars commemorating the 42nd Tokyo Motor Show 2011. You can make your original by selecting parts.



Gran Turismo Booth

Enjoy a full selection of cars from the classics to the latest models

The Play Station® 3 "Gran Turismo" booth is set up in the Atrium. Enjoy "Gran Turismo 5" which is especially made for the show.



Soap Box Derby

Mock car workshops are on a first-come-first-serve basis

Supported by the NPO group Soap Box Derby, a time trial using wooden mock cars will be held. Children in elementary school and their guardians are eligible to participate. The event will be at West Hall 3.



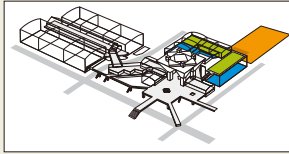
TOKYO MOTOR SHOW GUIDE 2011

A must-buy!

This official guidebook is loaded with information. It includes introductions of exhibited vehicles, information on carrozzerias and car goods, and car related apps. Published by Nikkan Jidosha Shimbun at 500 yen (taxes included).



The 42nd TOKYO MOTOR SHOW 2011 WEST HALL MAP



Manufacturers that are labeled in red letters have interview articles in this guide book

Rooftop Exhibition Area

Test ride cars driven by professional drivers
Dec 2 (Fri) to 6 (Tue)

Motorcycle test ride
Dec 8 (Thu) to 11 (Sun)

Electrically assisted bicycle test ride
Dec 8 (Thu) to 11 (Sun)

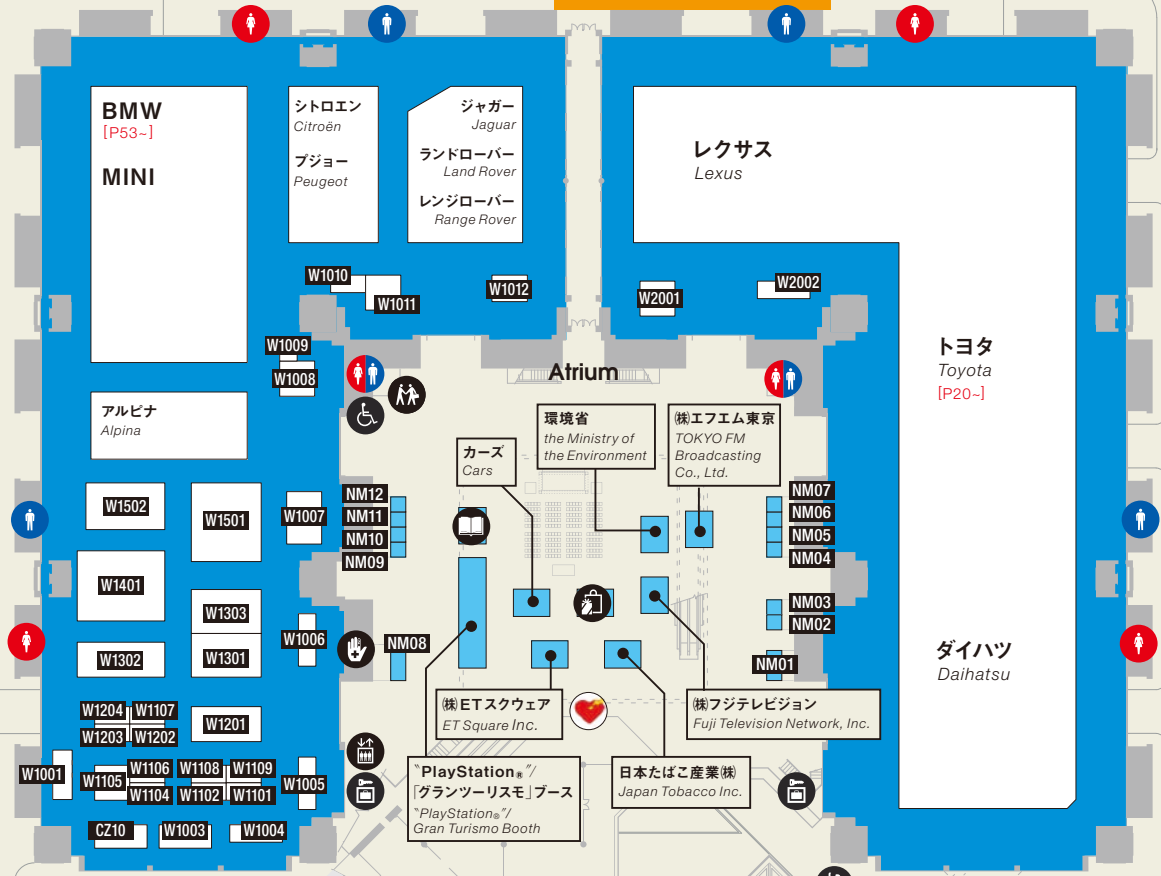


WORLD FOOD CUP

West Exhibition Hall 1F

WEST Hall 1

WEST Hall 2



走行関係部品 Drive train Related Parts

- W1004** 富士機工株式会社 Fuji Kiko Co., Ltd.
- W1005** (株)ヨロズ Yorozu Corp.
- W1006** Ohlins Racing AB
Militec Corp.
- W1007** (株)エクセディ Exedy Corp.
- W1008** 光生アルミニウム工業株式会社 Kosei Aluminum Co., Ltd.
- W1101** 日信工業株式会社 Nissin Kogyo Co., Ltd.
- W1101** GMB (株) GMB Corp.
- W1102** ナブテスコ オートモーティブ株式会社 Nabtesco Automotive Corp.
- W1107** 株式会社製作所 Matsui Universal Joint Corp.
- W1108** Hirschvogel Holding GmbH
- W1109** 協和工業株式会社 Kyowa Kogyo Co., Ltd.
- W1201** ジャヤトコ株式会社 Jatco Ltd.
- W1301** 日本発条株式会社 NHK Spring Co., Ltd.
- W1302** (株)ジェイテクト JTEKT Corp.
- W1303** 曙ブレーキ工業株式会社 Akebono Brake Industry Co., Ltd.
- W1401** NTN (株) NTN Corp. [P59-]
- W1501** アイシン精機株式会社 Aisin Seiki Co., Ltd. [P55-]
アイシン高丘株式会社 Aisin Takaoka Co., Ltd.
アイシン化学株式会社 Aisin Chemical Co., Ltd.
アイシン・エイ・ダブル株式会社 Aisin AW Co., Ltd.
アイシン・イー・アイ株式会社 Aisin AI Co., Ltd.
株式会社アドヴィックス Advics Co., Ltd.
- W1502** 日本精工株式会社 NSK Ltd.

内装部品 Interior Parts

- W1202** LG Hausys Ltd.
- エンジン部品 Engine Parts
- W1001** (株)リケン Riken Corp.
 - W1104** 日本ピストンリング株式会社 Nippon Piston Ring Co., Ltd.
 - W1105** (株)ダイセル Daicel Corp.
 - W1106** TPR (株) TPR Co., Ltd.
 - W1203** 富士精工株式会社 Fuji Bellows Co., Ltd.
 - W1204** (株)アールステイ Ahresty Corp.
- 機械器具 Machinery and Tools
- W1003** スナップオン・ツールズ株式会社 Snap-on Tools Japan K.K.
 - W1009** (株)ワイビーンシステム YP System Co., Ltd.
 - W1010** 京都機械工具株式会社 Kyoto Tool Co., Ltd.
 - W1012** 水戸工機株式会社 Mito Tool Mfg. Co., Inc.
 - W2001** (株)東日製作所 Tohnichi Mfg. Co., Ltd.
 - W2002** 前田金属工業株式会社 Maeda Metal Industries, Ltd.

カロツzeria Carrozzeria

- CZ10** AD Motors Co., Ltd.

新聞雑誌コーナー Newspaper & Magazine Corner

- NM01** (株)日刊自動車新聞社 Daily Automotive News
- NM02** (株)二女社 Nigensha Publishing Co., Ltd.
- NM03** (株)内外出版社 Naigai Publishing Co., Ltd.
- NM04** (株)カー・アンド・レジャー・ニュース Car and Leisure News Inc.
- NM05** (株)三樹書房 Miki Press
- NM06** (株)八重洲出版 Yaesu Publishing Co., Ltd.
- NM07** (株)交通タイムス社 Kotsu Times Sha Co., Ltd.
- NM08** (株)三栄書房 San-eishobo Publishing Co., Ltd.
(株)アイデア i-dea Co., Ltd.
- NM09** (株)ぼると出版 Porte Publishing Co.
- NM10** (株)モーターマガジン社 Motor Magazine Ltd.
- NM11** (株)フォーイン Fourin, Inc.
- NM12** (株)交通毎日新聞社 Kotsu Mainichi Shimbunsha Corp.

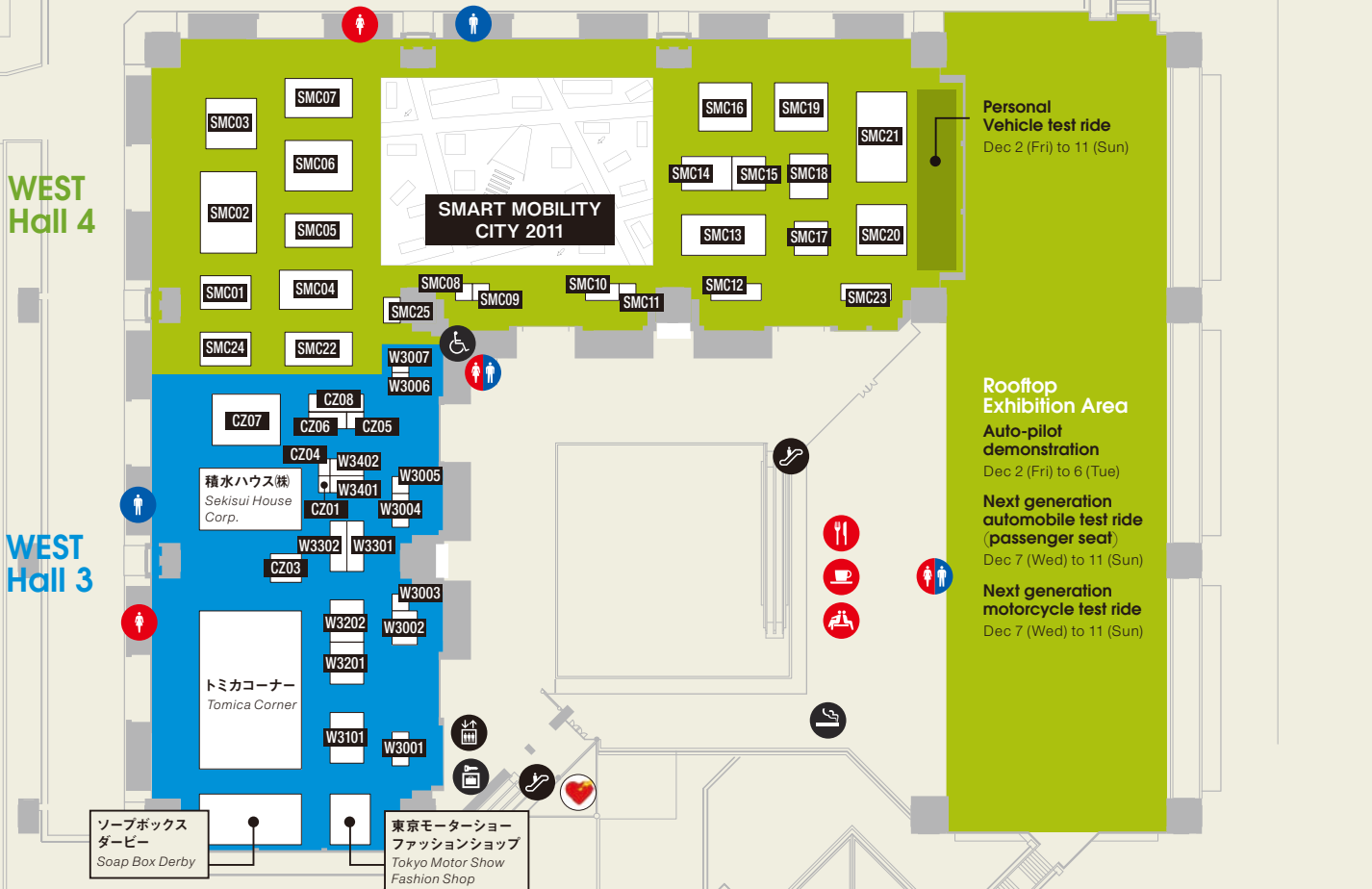
□ SMART MOBILITY CITY 2011

- SMC01** LPガス自動車普及促進協議会
Japan LPG Vehicle Promotion Association
- SMC02** 株式会社SIM-Drive SIM-Drive Corp.
慶應義塾大学 Keio University
- SMC03** フォルクスワーゲンAG VOLKSWAGEN AG [P32-]
- SMC04** 旭硝子株式会社 Asahi Glass Co., Ltd. [P42-]
- SMC05** 株式会社ecom ecom Corp.
- SMC06** 株式会社LIXIL LIXIL Corp. [P50-]
- SMC07** 本田技研工業株式会社 Honda Motor Co., Ltd.
- SMC08** 愛知電機株式会社 Aichi Electric Co., Ltd.
- SMC09** ワイヤレステクノロジー株式会社 Wireless Technologies, Inc.
- SMC10** 株式会社プロスタッフ Prostaff Co., Ltd.
- SMC11** 電気自動車普及協議会
Association for the Promotion of Electric Vehicles

- SMC12** 株式会社東芝 Toshiba Corp.
- SMC13** 株式会社日立製作所 Hitachi, Ltd.
日立アイイーシステム Hitachi IE Systems Co., Ltd.
日立オートモティブシステムズ株式会社
Hitachi Automotive Systems, Ltd. [P40-]
日立コンシューマ・マーケティング株式会社
Hitachi Consumer Marketing, Inc.
- SMC14** インターネットITS協議会 Internet ITS Consortium
- SMC15** 特定非営利活動法人 ITS Japan ITS Japan
沖電気工業株式会社 Oki Electric Industry Co., Ltd.
住友電気工業株式会社 Sumitomo Electric Industries, Ltd.
株式会社デンソー Denso Corp. [P54-]
日本電気株式会社 NEC Corp.
三菱電機株式会社 Mitsubishi Electric Corp. [P58-]
小島プレス工業株式会社 Kojima Press Industry Co., Ltd.

- SMC16** マツダ株式会社 Mazda Motor Corp.
- SMC17** 経済産業省資源エネルギー庁
Agency for Natural Resources and Energy
- SMC18** 株式会社エフエム東京 TOKYO FM Broadcasting Co., Ltd.
- SMC19** 日産自動車株式会社 Nissan Motor Co., Ltd.
- SMC20** 株式会社エヌ・ティ・ティ・ドコモ NTT DOCOMO, Inc. [P48-]
- SMC21** トヨタ自動車株式会社 Toyota Motor Corp.
- SMC22** 東レ株式会社 Toray Industries, Inc.
- SMC23** 国土交通省 Ministry of Land Infrastructure, Transport and Tourism
- SMC24** ゼネラルモーターズ・ジャパン株式会社
General Motors Japan Ltd.
- SMC25** 常盤産業株式会社 Tokiwa Corp.

West Exhibition Hall 4F



□ 電装・情報関連部品・自動車関連サービス

Electrical Parts, Information Related Parts, Automobile Related Services

- W3001** 株式会社リコー Ricoh Co., Ltd.
- W3002** 九都県市首脳会議 環境問題対策委員会 大気保全専門部会
9Capital prefectures city
Expert committee of the atmospheric preservation
- W3003** 株式会社アル・ダブリュー・シー R.W.C Co., Ltd.
- W3004** Whetron Electronics Co., Ltd.
- W3005** エーモン工業株式会社 Amon Industry Co., Ltd.
- W3006** 高齢者にやさしい自動車開発推進知事連合
Governor's alliance for
the development of senior-friendly automobiles
- W3007** 株式会社ベース Basis Co., Ltd.
- W3101** 一般社団法人日本自動車連盟
Japan Automobile Federation
- W3201** 自動車道路交通情報通信システムセンター
Vehicle Information and Communication System Center

- W3202** 国土交通省
Ministry of Land Infrastructure,
Transport and Tourism
自動車事故対策機構
National Agency
for Automotive Safety & Victim's Aid
- W3301** 国土交通省
Ministry of Land Infrastructure,
Transport and Tourism
- W3302** 社全国自動車標板協議会
National Automobile License Plate Council
- W3401** 北九州市 City of Kitakyushu
- W3402** 株式会社ワテックス Watex Co., Ltd.

□ カロッセリア Carrozzeria

- CZ01** ソーラーカーチーム プロミネンス Team Prominence
- CZ03** NATS 日本自動車大学校 Nihon Automobile College
- CZ04** 株式会社D Art D Art Co.
- CZ05** スマイルパーク株式会社 Smile Park Inc.
サニーサイドガレージ SunnySide Garage
- CZ06** 株式会社高山自動車 Takayama Cars Co., Ltd.
- CZ07** 興和テムザック株式会社 Kowa Tmsuk Co., Ltd.
- CZ08** レスク株式会社 Resc, Ltd.

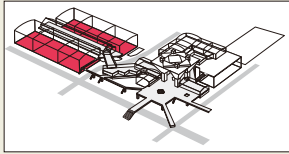
- オフィシャルグッズショップ Official Goods Shop
- 自動車ガイドブック販売所 Guide Book Stand
- インフォメーション INFORMATION
- 待ち合わせコーナー Meeting Point

- エレベーター Elevator
- エスカレーター Escalator
- 化粧室 Restroom

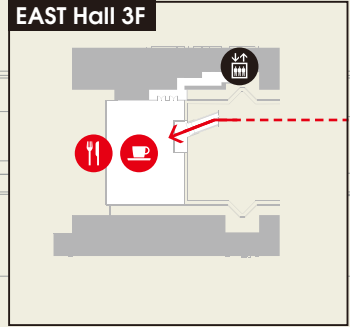
- 身障者用施設 Accessible Facility
- 乳幼児用施設 Nursery
- コインロッカー Coin Lockers
- 喫煙場所 Smoking Area

- 救護室 First Aid
- AED 自動体外式除細動機
AED / Automated External Defibrillator
- レストラン・カフェ・休憩ゾーン
Restaurant & Cafe, Rest Zone

The 42nd TOKYO MOTOR SHOW 2011 EAST HALL MAP



Manufacturers that are labeled in red letters have interview articles in this guide book



□ エンジン部品 Engine Parts

- E3201** Robert Bosch GmbH
ボッシュ(株) Bosch Corp. [P67-]
- E3202** MAHLE GmbH
株式会社 マーレ フィルターシステムズ
MAHLE Filter Systems Japan Corp.
マーレ エンジン コンポーネンツ ジャパン(株)
MAHLE Engine Components Japan Corp.
- E3203** Schaeffler KG
- E3204** Continental AG
Continental Teves AG & Co. oHG
Continental Automotive GmbH

□ タイヤ・ホイール・情報関連部品
Tire and Wheel / Information Related Parts

- E2010** 住友ゴム工業(株) Sumitomo Rubber Industries, Ltd. [P46-]
- E2011** ビーウイズ(株) Bewith Enterprise Japan, Ltd.
- E2012** 株式会社 レイズ Rays Co., Ltd.
- E2013** 株式会社 カナック企画 Kanack Planning Corp.
- E2101** 日本グッドイヤー(株) Goodyear Japan Ltd. [P56-]
- E2102** 横浜ゴム(株) The Yokohama Rubber Co., Ltd.
- E2103** 株式会社 ブリヂストン Bridgestone Corp. [P44-]
- E3015** 株式会社 ソニックデザイン Sonic Design Co., Ltd.

□ 団体 Organization

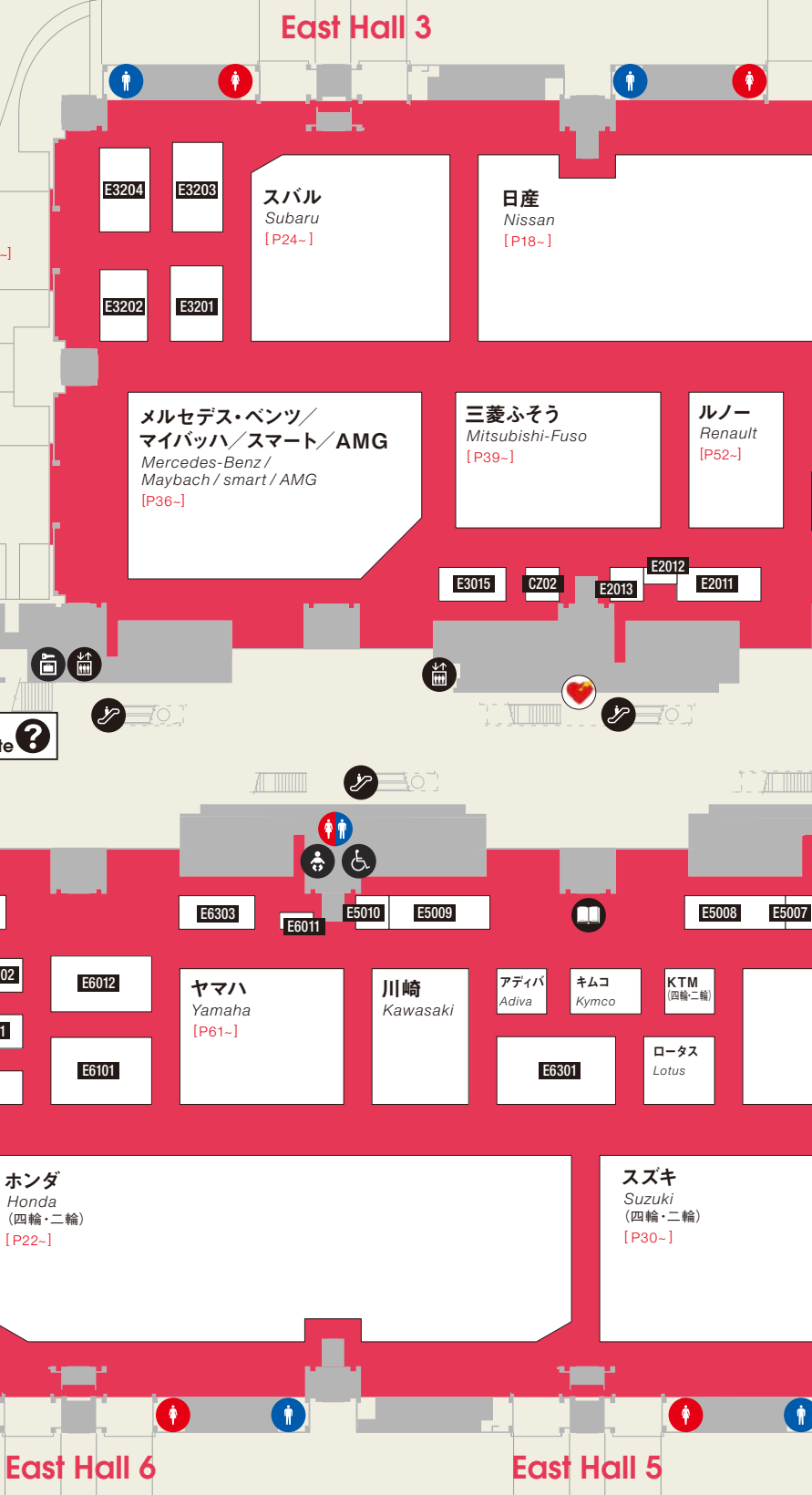
- E6015** 株式会社 アステア Astear Co., Ltd.
大野ゴム工業(株) Ohno Rubber Industrial Co., Ltd.
3D Auto Protech(株) 3D Auto Protech Co., Ltd.
大東プレス工業(株) Daito Press Mfg. Co., Ltd.
丸子警報器(株) Maruko Keihoki Co., Ltd.
やまと興業(株) Yamato Industrial Co., Ltd.
社団法人 日本自動車部品工業会
Japan Auto Parts Industries Association

□ エンジン・電装部品 Engine Parts / Electrical Parts

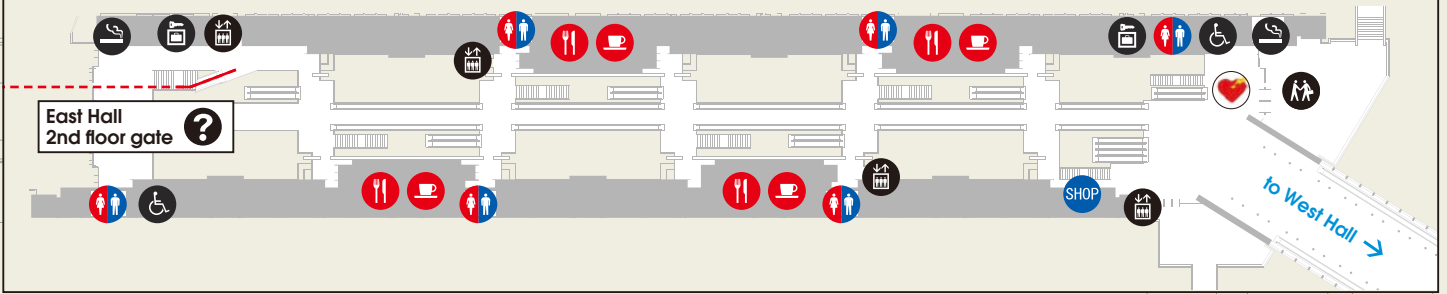
- E6305** リョービ(株) Ryobi Ltd.
- E6402** イワタボルト(株) Iwata Bolt Co., Ltd.
- E6501** NOK(株) NOK Corp.
- E6502** 大同メタル工業(株) Daido Metal Co., Ltd.
- E6503** ユアサ工機(株) Yuasa Co., Ltd.
- E6504** 株式会社 クゼフ Kuzeh Corp.
- E6505** 日本モレックス(株) Molex Japan Co., Ltd.
- E6601** 日鍛バルブ(株) Nittan Valve Co., Ltd.
- E6602** 大豊工業(株) Taiho Kogyo Co., Ltd.
- E6603** 東京濾器(株) Tokyo Roki Co., Ltd.
- E6604** 三輪精機(株) Sanwa Seiki Ltd.
- E6701** 株式会社 ミクニ Mikuni Corp.
- E6702** Scuderia Group, LLC Scuderia Group, LLC
- E6703** HKT(株) HKT Corp.

□ 電装・計器・照明部品 Electrical Parts

- E5010** 永井電子機器(株) Nagai Electronic Inst. Co., Ltd.
- E6011** 株式会社 今仙電機製作所 Imasen Electric Industrial Co., Ltd.
- E6012** 三菱電機(株) Mitsubishi Electric Corp. [P58-]
- E6013** 株式会社 東海理化 Tokai Rika Co., Ltd.
- E6014** 株式会社 ミツバ Mitsuba Corp.
- E6101** 日立オートモティブシステムズ(株) Hitachi Automotive Systems, Ltd. [P40-]
新神戸電機(株) Shin-Kobe Electric Machinery Co., Ltd.
日立化成工業(株) Hitachi Chemical Co., Ltd.
日立ビークルエナジー(株) Hitachi Vehicle Energy, Ltd.
クラリオン(株) Clarion Co., Ltd.
トキコテクノ(株) Tokico Technology Ltd.
- E6102** スタンレー電気(株) Stanley Electric Co., Ltd.
- E6103** 株式会社 ユーシン U-Shin Ltd.
- E6104** 日立金属(株) Hitachi Metals, Ltd.
- E6105** 朝日電装(株) Asahi Denso Co., Ltd.



EAST Hall 2F



East Hall 2

East Hall 1



Outdoor car exhibition area
Car body

- 極東開発工業株式会社 Kyokuto Kaihatsu Kogyo Co., Ltd.
- 新明和工業株式会社 ShinMaywa Industries, Ltd.
- 須河車体株式会社 Sugawa Shatai Co., Ltd.
- 株式会社 タダノ Tadan Ltd.
- 日本トレクス株式会社 Nippon Trex Co., Ltd.
- 日本フルハーフ株式会社 Nippon Fruehauf Co., Ltd.
- 株式会社 パブコ Pabco Co., Ltd.
- 富士重工業株式会社 Fuji Heavy Industries Ltd.
- 一般社団法人日本自動車車体工業会 Japan Auto-Body Industries Association, Inc.

- 電装・車体・内装・エンジン部品
Electrical Parts / Body and Interior Parts / Engine Parts
- E1002 Stahl Europe bv
- E1003 Qingdao Kinglite Machinery Electron and Technology Co., Ltd.
- E1004 株式会社 上開明堂 Murakami Corp.
- E1005 インファステック株式会社 Infastech K.K.
- E1008 河西工業株式会社 Kasai Kogyo Co., Ltd.
- E1009 日本ドナルドソン株式会社 Nippon Donaldson, Ltd.

Blood donation corner

□ 電装・計器・照明部品 Electrical Parts

- E6201 株式会社 豊田自動織機 Toyota Industries Corp.
- E6202 オムロン オートモーティブエレクトロニクス株式会社 Omron Automotive Electronics Co., Ltd.
- E6203 住友電気工業株式会社 Sumitomo Electric Industries, Ltd.
- 住友電装株式会社 Sumitomo Wiring Systems, Ltd.
- 東海ゴム工業株式会社 Tokai Rubber Industries, Ltd.
- E6301 株式会社 デンソー Denso Corp. [P54-]
- アスモ株式会社 Asmo Co., Ltd.
- アンデン株式会社 Anden Co., Ltd.
- 浜名湖電装株式会社 Hamanako Denso Co., Ltd.
- E6302 矢崎総業株式会社 Yazaki Corp.
- E6303 株式会社 小糸製作所 Koito Mfg. Co., Ltd.
- E6304 株式会社 ケihin Keihin Corp.
- E6401 日本特殊陶業株式会社 NGK Spark Plug Co., Ltd.

□ 内装部品・用品 Interior Parts

- E4001 イサム塗料株式会社 Isamu Paint Co., Ltd.
- E4002 ミドリホクヨー株式会社 Midori Hokuyo Co., Ltd.
- E4003 株式会社 タチエス Tachi-S Co., Ltd.
- E4004 デルタ工業株式会社 Delta Kogyo Co., Ltd.
- E4005 ティ・エス テック株式会社 TS Tech Co., Ltd.
- E4006 株式会社 カーマイト Garmate Mfg. Co., Ltd.
- E5007 株式会社 データシステム Data System Co., Ltd.
- E5008 トヨタ紡織株式会社 Toyota Boshoku Corp.
- E5009 豊田合成株式会社 Toyoda Gosei Co., Ltd.

□ カロッセリア Carrozzeria

- CZ02 キャンパニャモータース・ジャパン Campagna Motors Japan
- CZ09 Radical Sportscars Ltd.

- オフィシャルグッズショップ Official Goods Shop
- 自動車ガイドブック販売所 Guide Book Stand
- インフォメーション INFORMATION
- 待ち合わせコーナー Meeting Point
- エレベーター Elevator
- エスカレーター Escalator
- 化粧室 Restroom
- 身障者用施設 Accessible Facility
- 乳幼児用施設 Nursery
- 授乳室 Nursing Room
- コインロッカー Coin Lockers
- 喫煙場所 Smoking Area
- 救護室 First Aid
- AED 自動体外式除細動機 AED / Automated External Defibrillator
- レストラン・カフェ・休憩ゾーン Restaurant & Cafe, Rest Zone
- ショップ・サービス施設 Shops & Service Facilities
- 乳児・幼児サービスセンター Infant / Child Care Center

BRIDGESTONE
あなたと、つぎの景色へ

「止まる」がすごい。
ブリザック

レボジーゼット **REVO GZ** レボツー **REVO 2**

BLIZZAK

株式会社ブリヂストン [ブリヂストンお客様相談室] フリーダイヤル0120-39-2936 受付時間:月~金(祝日・当社指定休日は除く)9:00~17:00 月に一度は、空気圧の点検を! www.bridgestone.co.jp

きっと、未来のクルマが帰る家。

SEKISUI HOUSE

西3ホールでお待ちしております。

NKSJグループ

自動車保険は、「やっぱり」日本興亜。

あなたを全力で支える。 **日本興亜損保**

日本興亜損保は第42回東京モーターショー2011を応援しています。

GRAN TURISMO
THE REAL DRIVING SIMULATOR

西展示棟 アトリウムにて
PS3で「グランツーリスモ5」が体験できます。

PlayStation 3

*「PlayStation 3」"PlayStation" and "PlayStation" are registered trademarks of Sony Computer Entertainment Inc.
©2010 Sony Computer Entertainment Inc. Manufacturers, cars, names, brands and associated imagery featured in this game in some cases include trademarks and/or copyrighted materials of their respective owners. All rights reserved.
Any depiction or recreation of real world locations, entities, businesses, or organizations is not intended to be or imply any sponsorship or endorsement of this game by such party or parties.

ET² × SCRAP

musicChef × 謎解き
スパイゲーム

迷宮

モーターショー

西展示棟 アトリウム内

さあET²ブースへ駆け!!

12.3 sat > 12.11 sun TOKYO MOTOR SHOW 2011

※ このイベントは、実際にあなたがスパイとなって、謎を解くゲームイベントです。

毎月わくわく!
第3土曜日は
トミカの日

〈出展内容〉
・東京モーターショー開催記念トミカ販売 ・トミカ組み立て工場
・カーズトミカ、トランスフォーマー商品先行発売 等

Official Airline



Press Center Support



Employing technology for the environment, safety,
and information, Hitachi Automotive Systems represents
a global driving force of future automobiles.



Environment



Safety

Information



Driving Force

for Global Automobiles

At Hitachi Automotive Systems, we pursue new possibilities for automobiles with the aim of finding solutions for society and creating new value. Our commitment represents at four system businesses in three fields, in the environment field "Engine Management Systems" and "Electric Powertrain Systems" for environment protection, in the safety field, "Drive Control Systems" for safety improvement, and in the information field, "Car Information Systems" for comfort and convenience, Hitachi Automotive Systems is set to be a driving force for the global expansion of future automobiles.



SUBARU
Confidence in Motion

Superior handling and balance.
Only from a SUBARU BOXER®.



SUBARU
BRZ
Proud of BOXER

See this sensational new model at the Subaru booth.

Subaru BRZ will compete in the 2012 Super GTseries (GT300 class).

Subaru customer center: 0120-052215 Open: 9:00-17:00 (weekdays), 9:00-12:00, 13:00-17:00 (weekends and holidays)
Note: Only information Service is available 12:00-13:00 on weekdays and during all open hours on weekends and holidays.

www.subaru.jp
Mobile access: http://m.subaru.jp/